

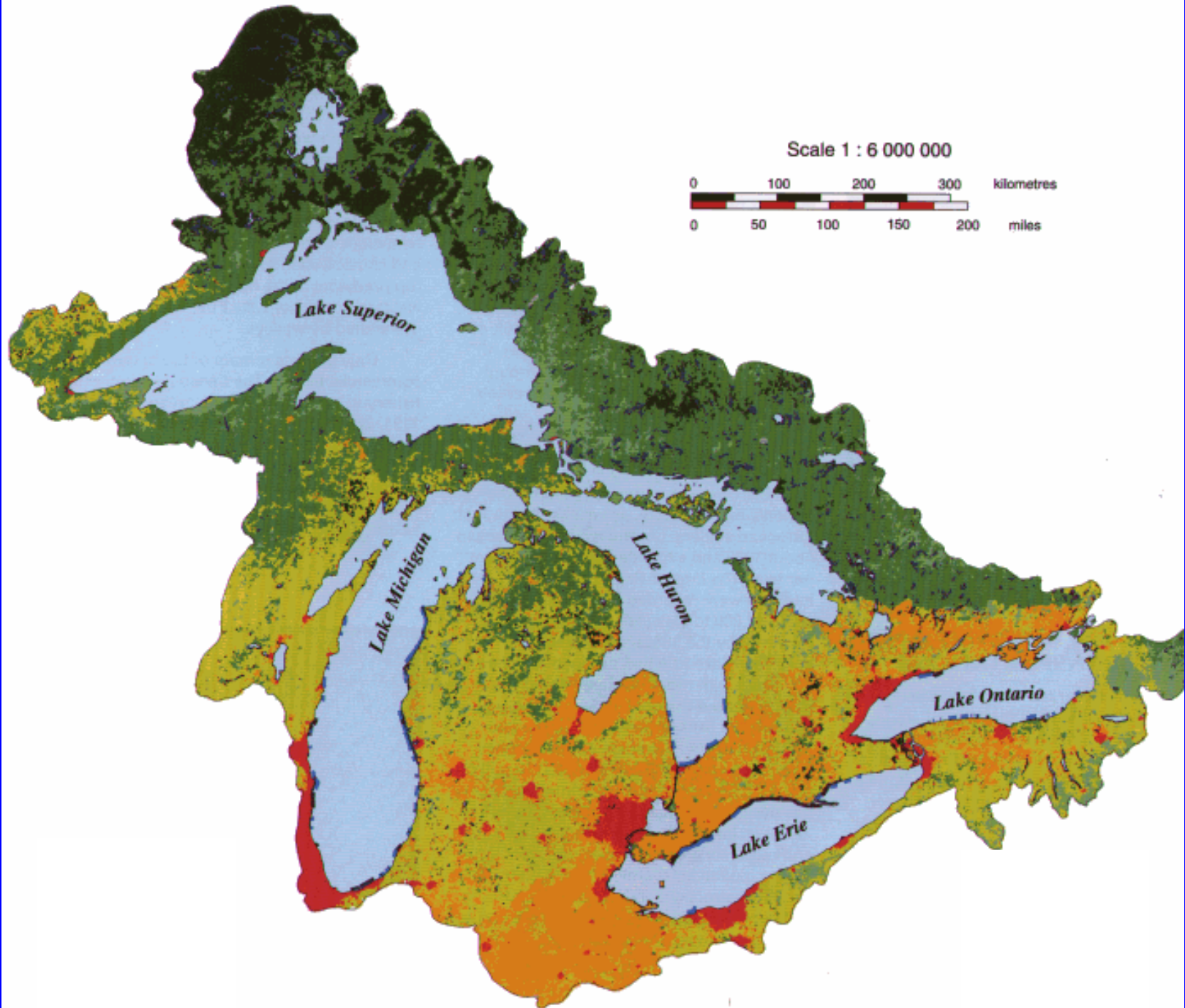
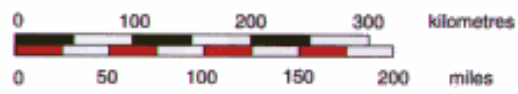
PLUARG- a multiagency research effort

Harvey Shear, Ph.D.

PLUARG

- **What initially prompted the effort? (e.g. nature of the problem - human health danger, urgent environmental crisis, endangered resources, some other crisis, etc.)**

Scale 1 : 6 000 000



- **PLUARG was established pursuant to the 1972 GLWQA as a Reference from governments to IJC**
- **Objective was to determine “if the boundary waters of the Great Lakes system are being polluted by land drainage...if so where, by what causes, to what extent and what are the practical remedial measures and their costs”**

PLUARG

- **What / who was the primary driver that brought people together, got the project organization started and kept it going?**
- **The IJC reference got PLUARG established. Initially the issue was nutrient pollution, but this quickly expanded to include contaminants**

PLUARG

- **How was it coordinated?**
- **PLUARG had a central steering committee of equal numbers of Canadian and US members with a national Secretary for each side as well as a secretary from the Regional Office.**
- **It was organized into 4 main Task Areas:**

PLUARG Organization

- **Task A - assess problems, management programs, and research, set priorities in relation to effects of land use on water quality;**
- **Task B - create an inventory of land use and land use practices;**

- **Task C - pilot watershed research studies;**
- **Task D - assess degree of in lake impairment of water quality (sediments, fish, water)**

What worked, what didn't work?

Why?

- **It all worked remarkably well. PLUARG was perhaps 10-15 years ahead of its time in terms of -**
- **approach and results;**
- **coordination;**
- **integration of many diverse studies into a final report; and**
- **for the IJC, in terms of public involvement.**

- **AND ABOVE ALL IN TERMS OF PEOPLE FROM MANY DISCIPLINES WORKING TOGETHER**
- **Why did it work?** Dedicated people who had a single mindedness of purpose, and lots of \$\$\$\$\$

What did not work?

- **The follow up to PLUARG was a flop. Nothing much happened for 20 years. Land use was almost invisible on the Great Lakes agenda until the Parties raised the topic in 1996 at the State of the Lakes Ecosystem Conference.**
- **Many PLUARG recommendations are still relevant and timely.**

Based on your experience, what do you recommend incorporating in a Great Lakes research coordination strategy?

- **The strategy should stress clarity of purpose as a guiding principle.**
- **Ensure that any research strategy stresses multidisciplinary approach, including socio-economics as appropriate.**

- **The strategy should stress a reporting element - not just primary literature reporting, but “public” reporting, since the funding will come from public sources.**
- **Divide up the work of building the project and delivering it, and ensure good coordination in pulling the results together at the end.**

- **Ensure that there is enough \$\$ for planning and reporting.**
- **Consider the scale and the issues.....**
“bite off as much as you can chew,
not more”