

What's New in the Weather Department?

Great Lakes Captains Association
January 24-26, 2007



Amy Seeley
Port Meteorological Officer
"Queen of the Lakes"

Port Meteorological Officers

- Main job is to visit ships in support of the VOS program
 - Calibrate barometers
 - Train the ships personnel on the observation process
 - Supply them with handbooks, instructions, equipment, etc..
 - Talk about the available marine forecasts



GREAT LAKES PORT FORECAST
NATIONAL WEATHER SERVICE DULUTH MN
331 AM CST THU JAN 25 2007

LSZ144-252145-
DULUTH HARBOR-LAKE SUPERIOR
46.75N 92.06W
331 AM CST THU JAN 25 2007

DATE	THU 01/25/07										FRI
UTC 3HRLY	09	12	15	18	21	00	03	06	09	12	
CST 3HRLY	03	06	09	12	15	18	21	00	03	06	
WAVES	1	1	1	1	1	1	1	1	1	1	
WIND DIR	N	NW	W	W	SW	SW	SW	SW	SW	SW	
WIND SPD	9	8	6	6	8	10	12	14	16		
WIND GUST	13	10	6	6	10	13	16	18	21		
CLOUDS	B1	B1	B1	B1	OV	OV	OV	OV	OV	B2	
SNOW						C	C	C	C	S	
SNOWSHRS	S	S									

&&

LSZ322-252130-
S00 LOCKS-ST. MARYS RIVER-
46.50N 84.37W
421 AM EST THU JAN 25 2007

DATE	THU 01/25/07								FRI	
UTC 3HRLY	08	11	14	17	20	23	02	05	08	11
EST 3HRLY	03	06	09	12	15	18	21	00	03	06
WIND DIR	N	N	N	NW	W	NW	W	S	SE	
WIND SPD	6	7	6	7	5	5	4	3	4	
WIND GUST	13	12	12	15	14	11	7	5	5	
CLOUDS	B2	B2	B2	B2	B2	B2	B2	B1	B1	
SNOWSHRS		C	C	C	C	C	C	C	C	

&&

MAFOR 2510/
S00 LOCKS 13800 11700 11600 11700 11600 11400.

WAVES ARE NOT FORECAST FOR THIS PORT

\$\$

Port Forecast Cities

Grand Haven

St. Joseph

Alpena

Calcite

Frankfort

Soo Locks

Port Huron

Port of Saginaw

Port of Detroit

Burns Harbor

Calumet Harbor

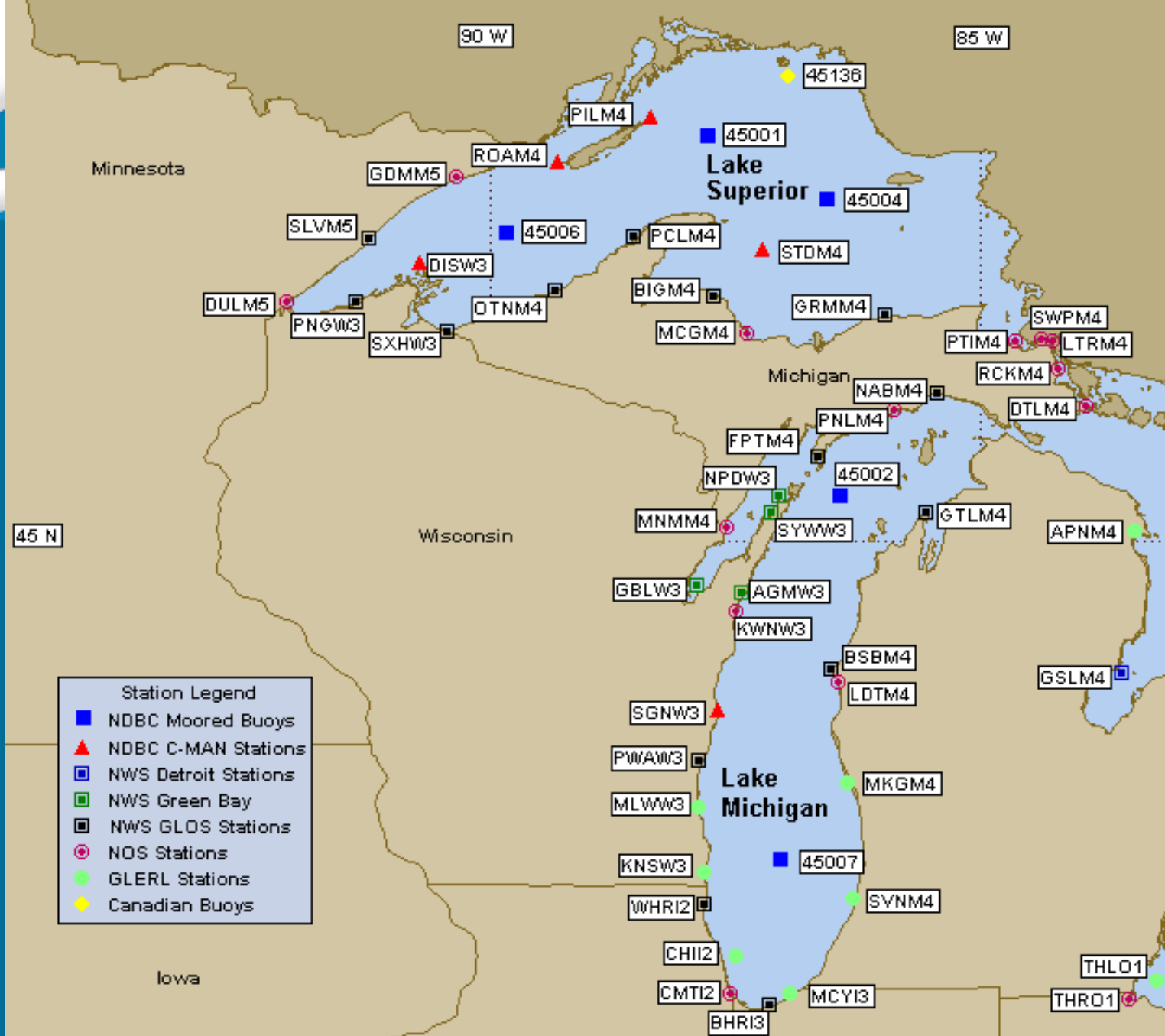
Milwaukee Harbor

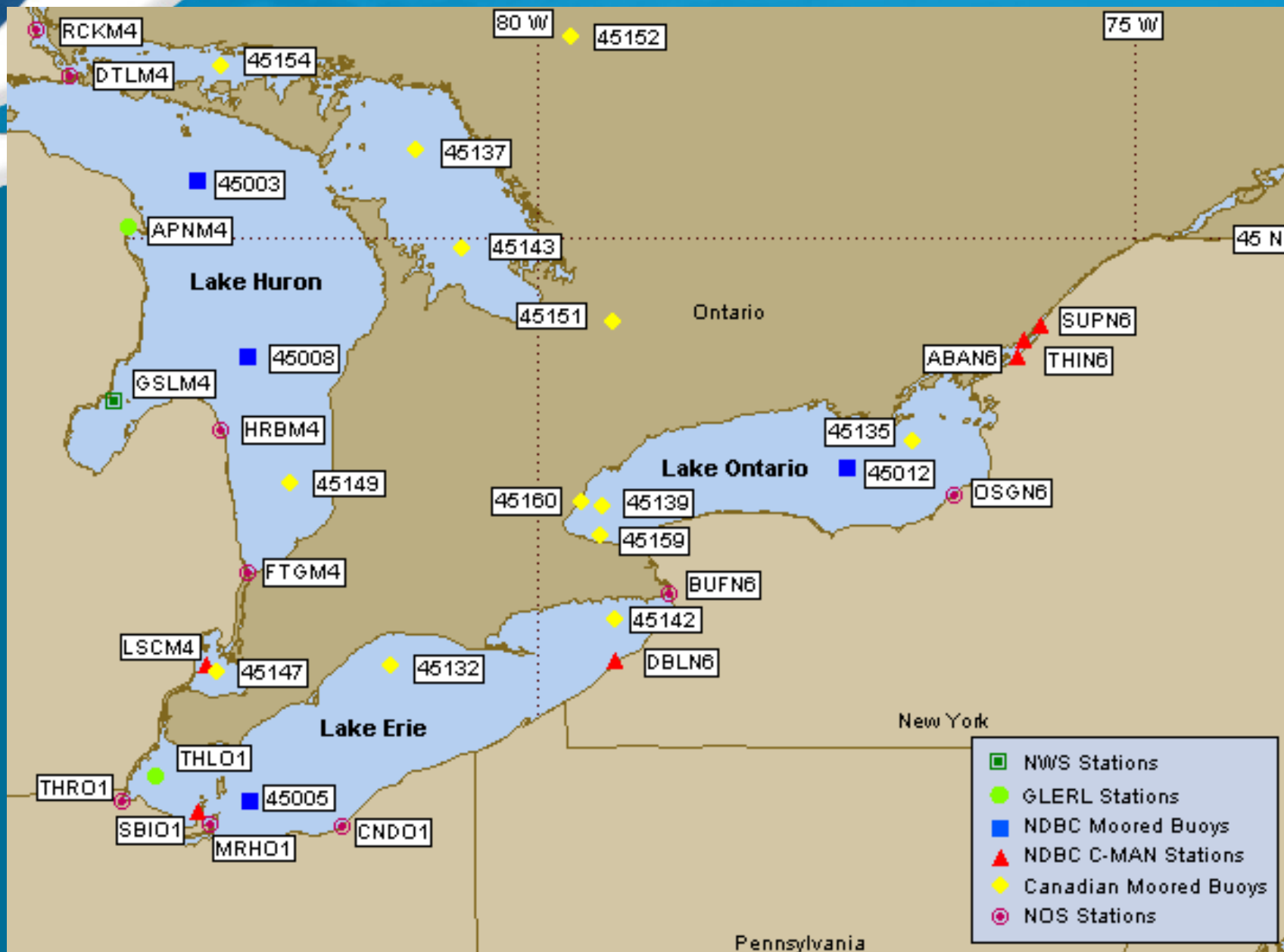
Presque Isle Harbor

Escanaba

Duluth

Two Harbors

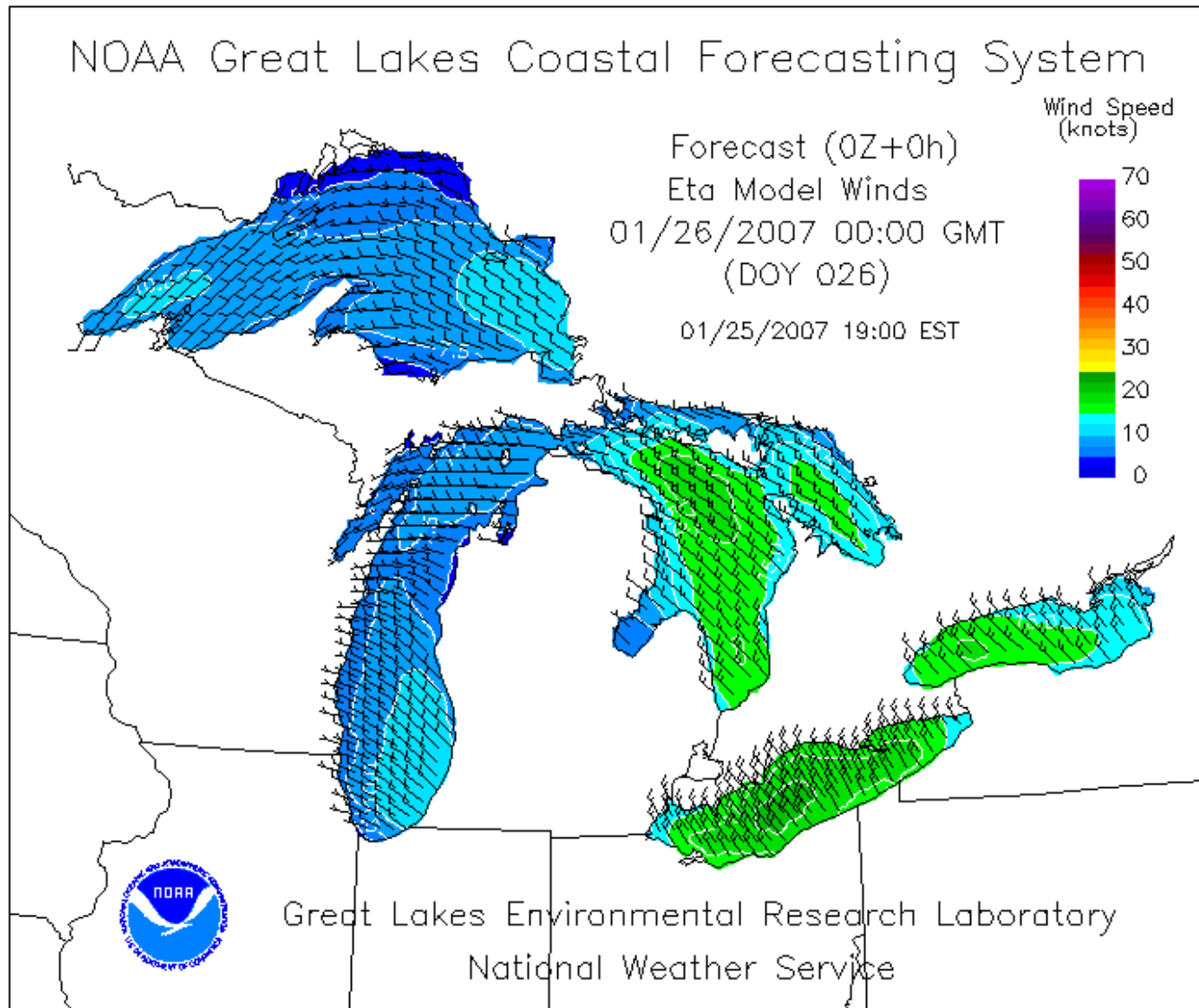


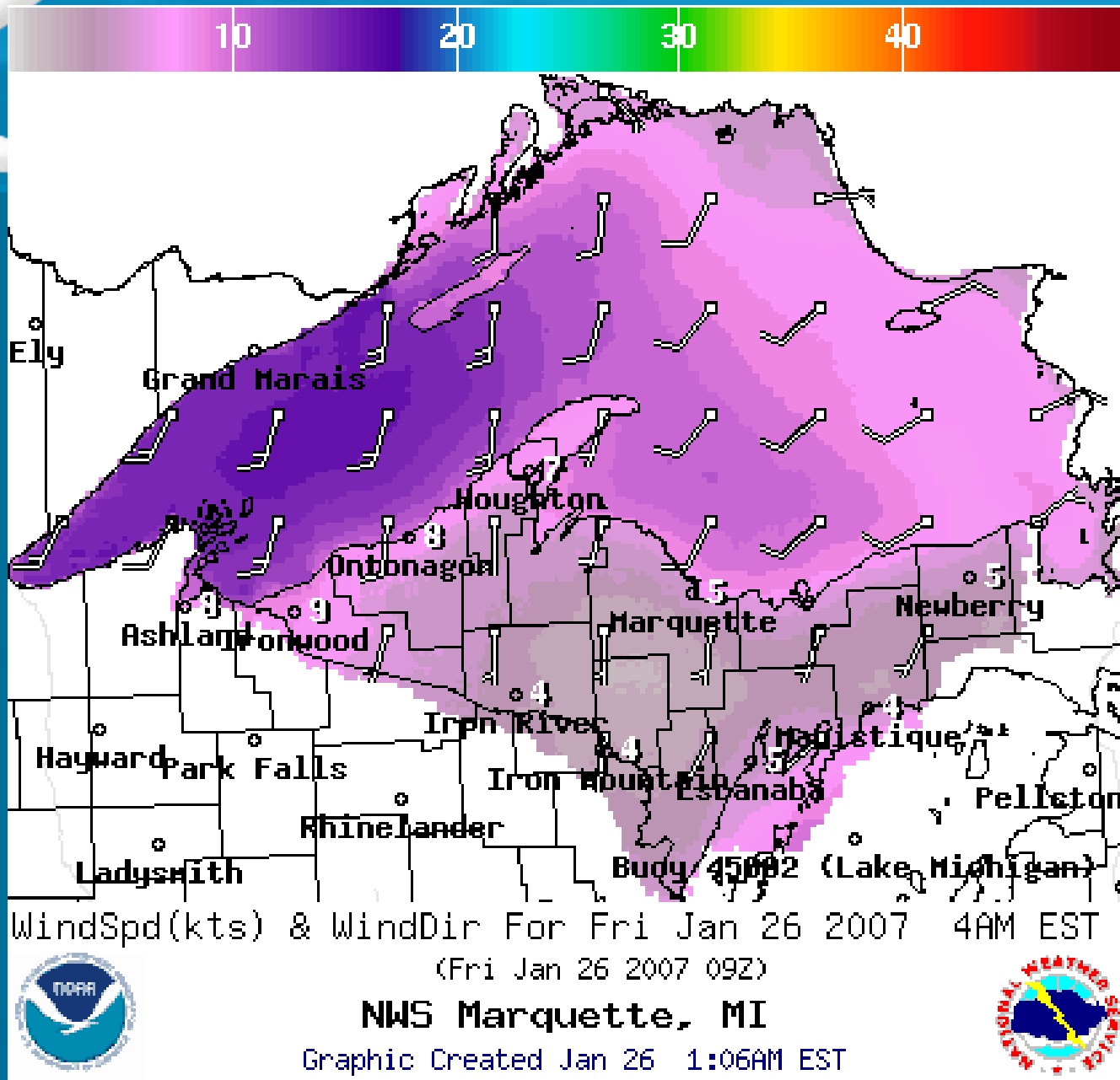


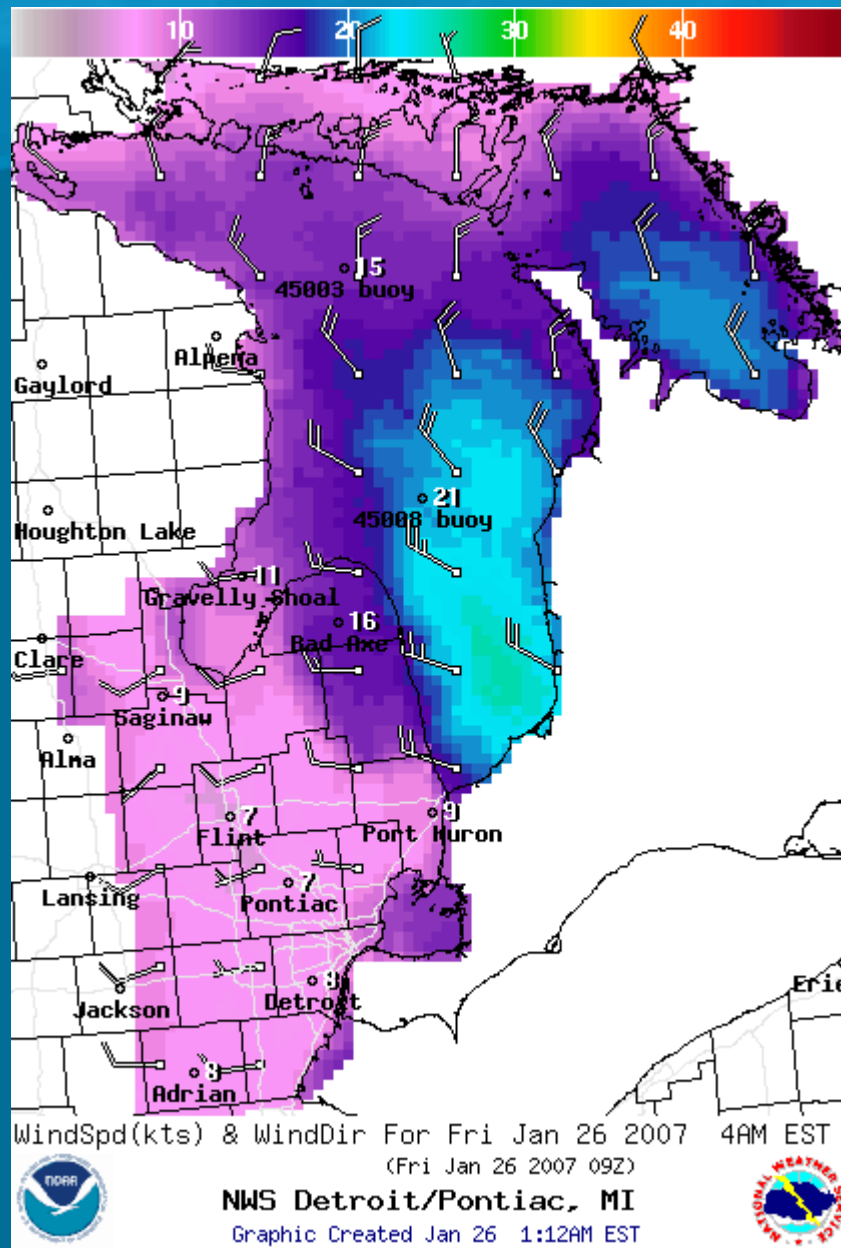
The top 12 sites for FY2007.

1. **Big Bay, MI**
2. **Whitefish Point, MI**
3. **Chambers Island, WI**
4. **St. Joseph, MI**
5. **Two Harbors, MN**
6. **Racine, WI**
7. **Superior Grand Traverse Bay, MI**
8. **Port Sanilac, MI**
9. **St. Claire Shores, MI**
10. **East Chicago, IN**
11. **Forty Mile Point, MI**
12. **Grand Portage, MN**

GLERL/NOAA CO-OP models







One Stop Shopping

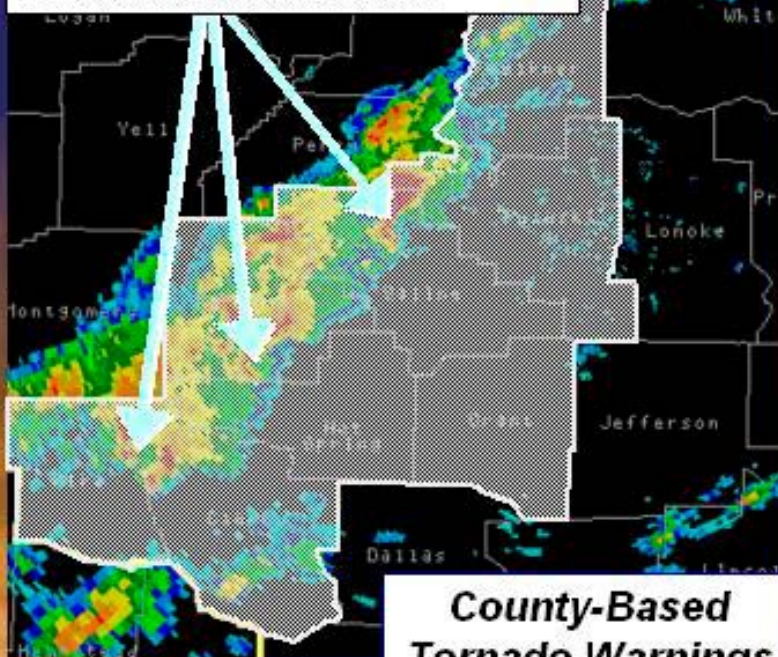
Website that has all marine products for the Great Lakes due out April 1!

Other NWS Changes



From County-Based Warnings to Storm-Based Warnings

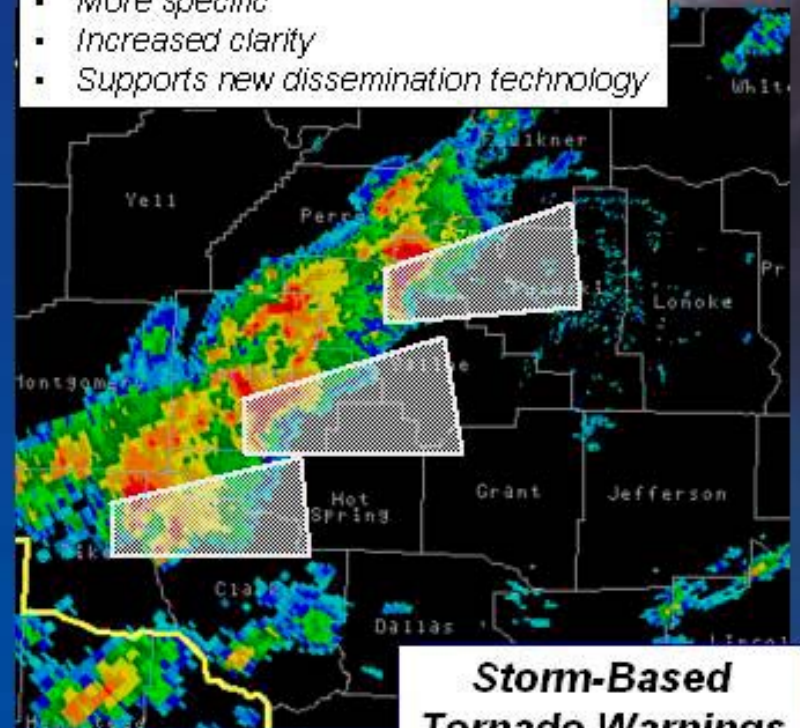
Three simultaneous tornadoes within line of severe thunderstorms



**County-Based
Tornado Warnings**

8 counties under warning
Almost 1 million people warned

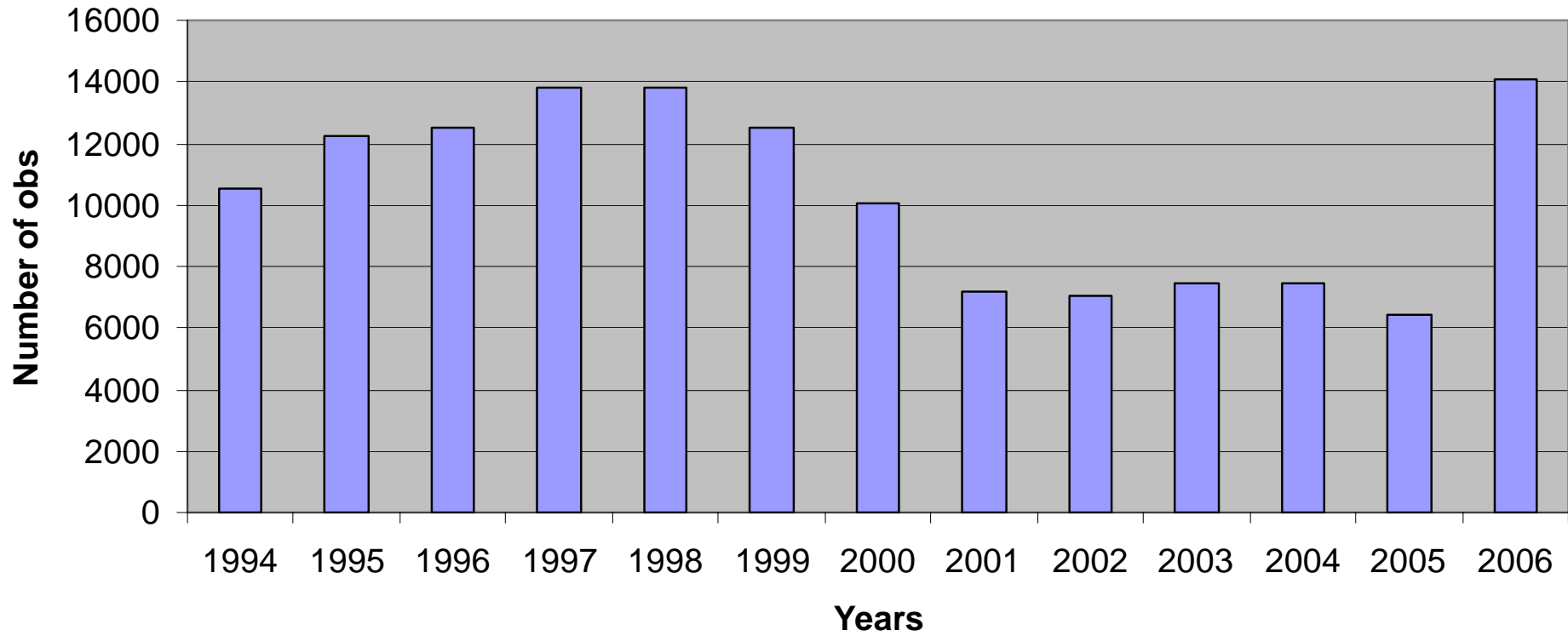
- More specific
- Increased clarity
- Supports new dissemination technology



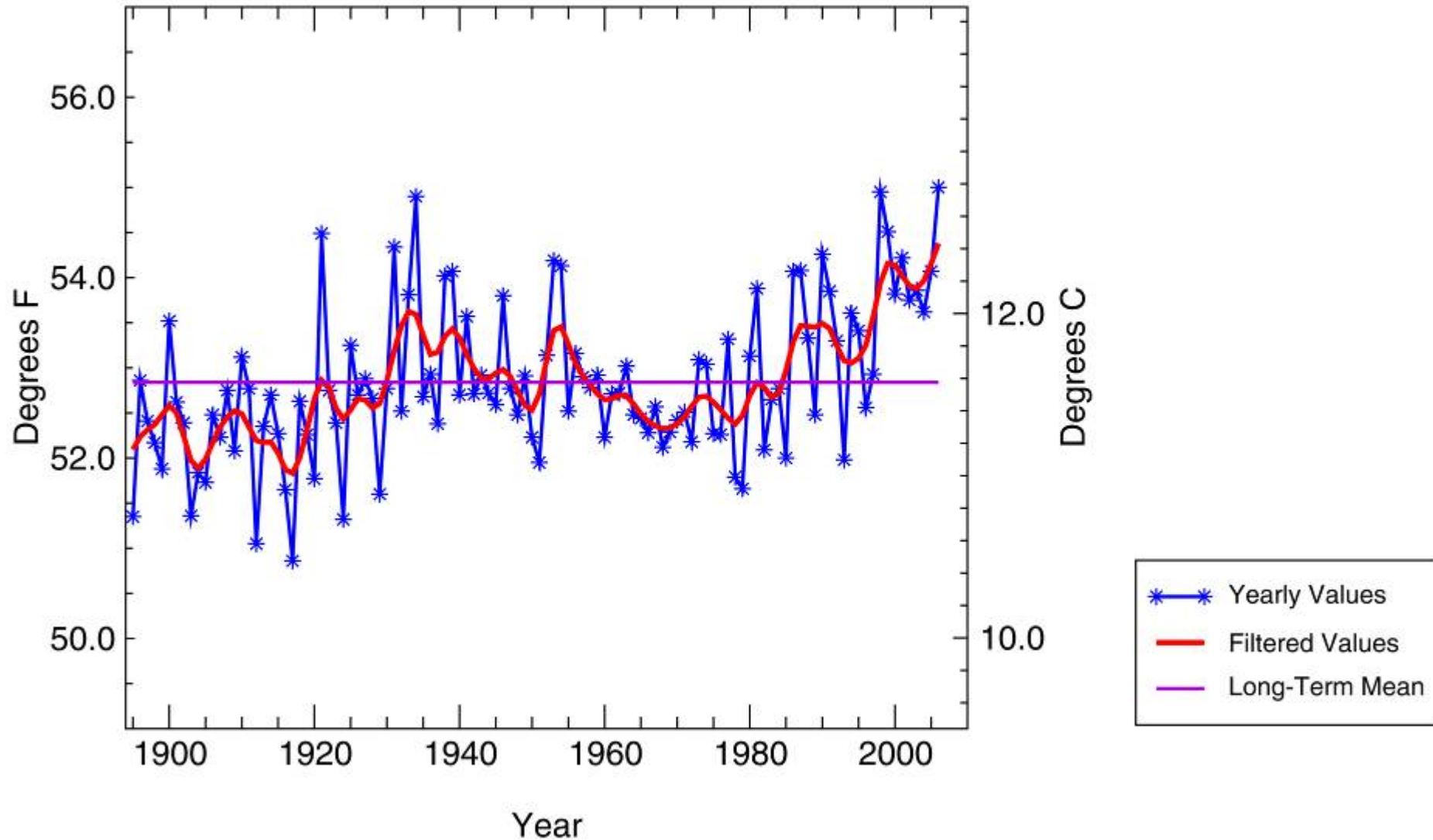
**Storm-Based
Tornado Warnings**

70% less area covered
~600,000 fewer people warned

Ship Observations



National (Contiguous U.S.) Temperature 1895 - 2006



National Climatic Data Center / NESDIS / NOAA

<u>NWS Office</u>	<u>Telephone</u>	<u>Office Hours/Local Time</u>
Buffalo, NY	716-565-0204	8:00am-5:00pm Mon-Fri
	716-565-0802*	24 hours
Cleveland, OH	216-265-2370	8:30am-4:30pm Mon-Fri
	Recorded forecast only at other times.	
Detroit, MI	248-620-9804	8:00am-4:00pm Mon-Fri
	Recorded forecast only at other times.	
Gaylord, MI	989-732-6242	24 hours
Grand Rapids, MI	616-949-4253*	24 hours
	616-956-7180	8:00am-4:30pm Mon-Fri
Chicago, IL	815-834-0675*	24 hours
	815-834-1435	8:00am-8:00pm Mon-Fri
Milwaukee, WI	414-744-8000*	24 hours
Green Bay, WI	920-494-2363	8:00am-4:00pm Mon-Fri
Marquette, MI	906-475-5212*	24 hours
	24 hour recording with ring-through	
Duluth, MN	218-729-6697	24 hours
	24 hour recording with ring-through	

* Recorded forecast only.

The End

