

A wide expanse of blue water with a distant horizon under a clear sky. The water is a deep blue color with small ripples on the surface. The horizon is a straight line in the distance, and the sky is a pale, clear blue.

UWM's School of Freshwater Sciences

established in **2009**: the nation's only

School of Freshwater Sciences



\$50M facility of laboratories, conference & classrooms **2014**



64 years of
yeoman
service



The **RV Maggi Sue**

~ \$20M



800
SQUARE FEET
OF LAB SPACE

VEGETABLE-BASED
FUELS & LUBRICANTS

HOLDS POSITION EVEN AGAINST CURRENT

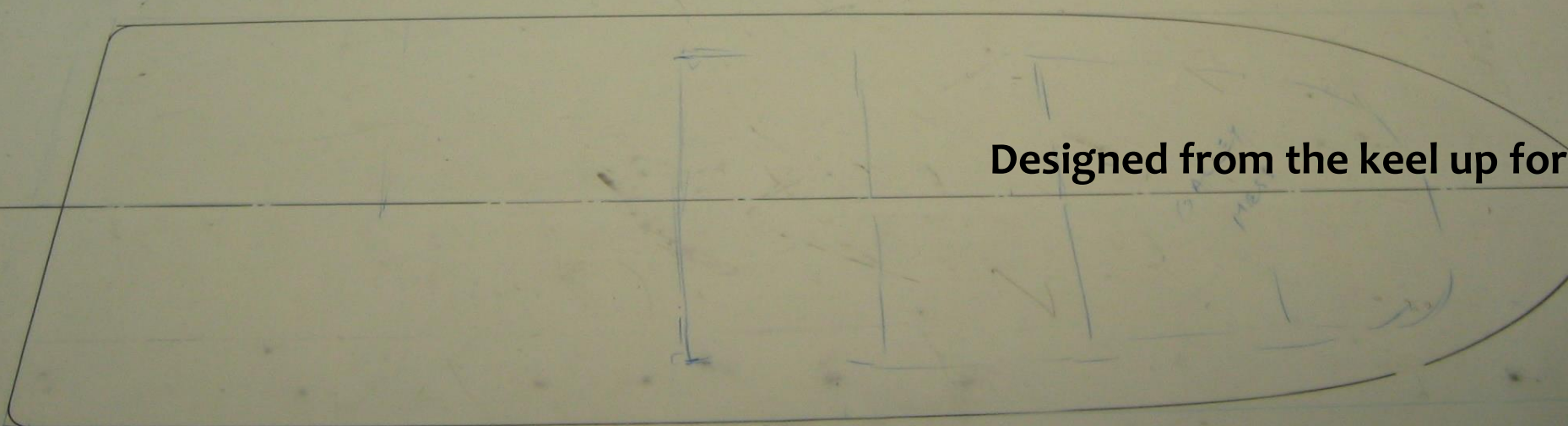
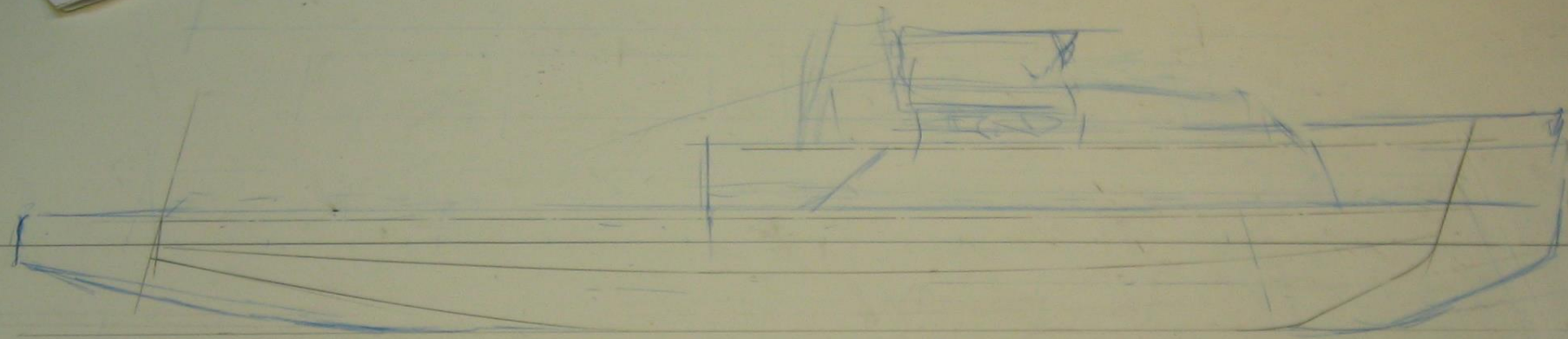
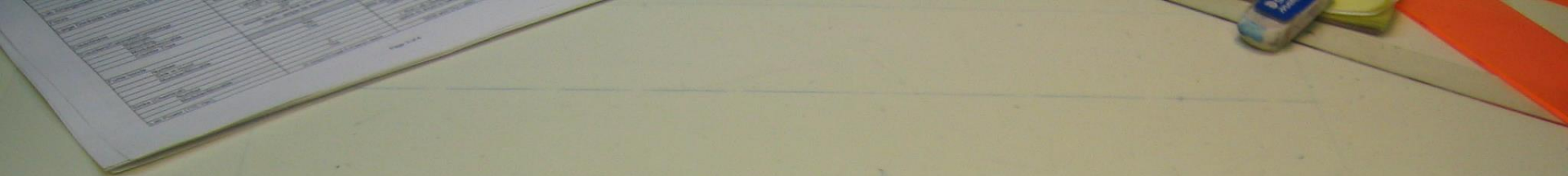
OVERNIGHT ACCOMMODATIONS FOR **18** SCIENTISTS AND CREW

CLASSROOM
SPACE FOR UP TO
24 STUDENTS

EQUIPPED TO STAY
10-DAYS
AT SEA

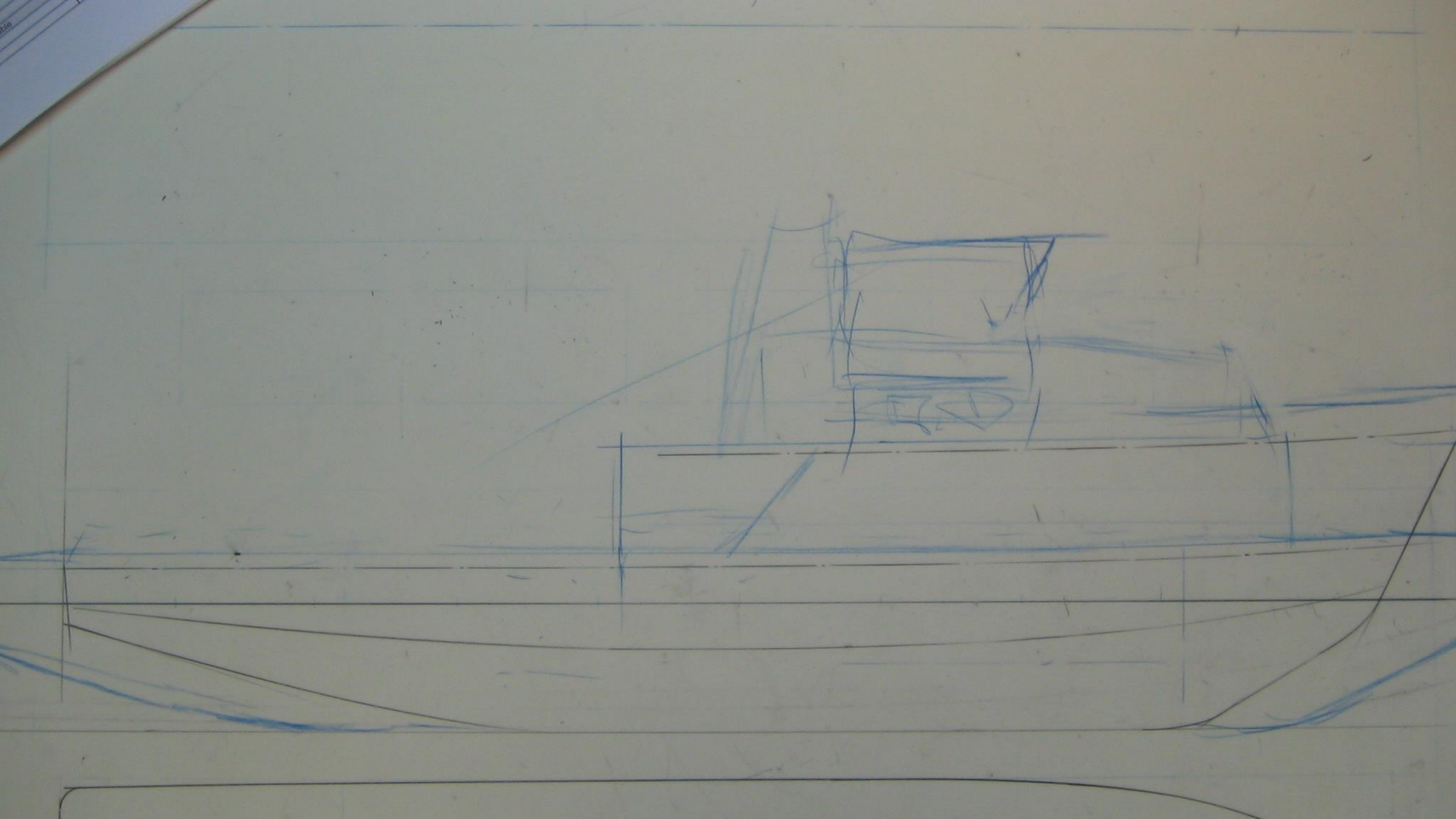
SENSORS COLLECT
REAL-TIME DATA
WHILE UNDER WAY

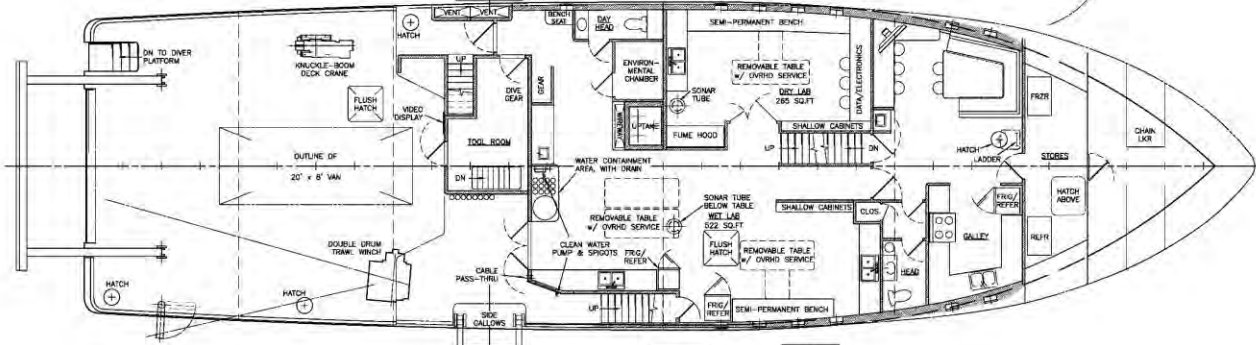
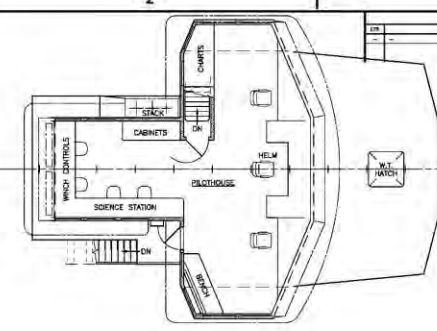
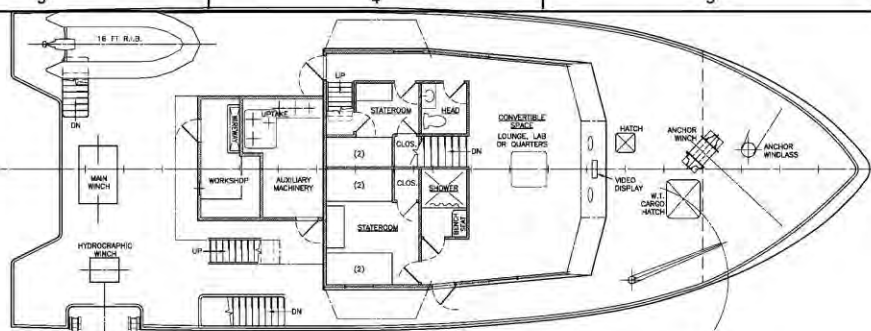
INTERCHANGEABLE
LAB "PODS"
FOR DIFFERENT
**RESEARCH
GROUPS**



Designed from the keel up for Great Lakes **Science**

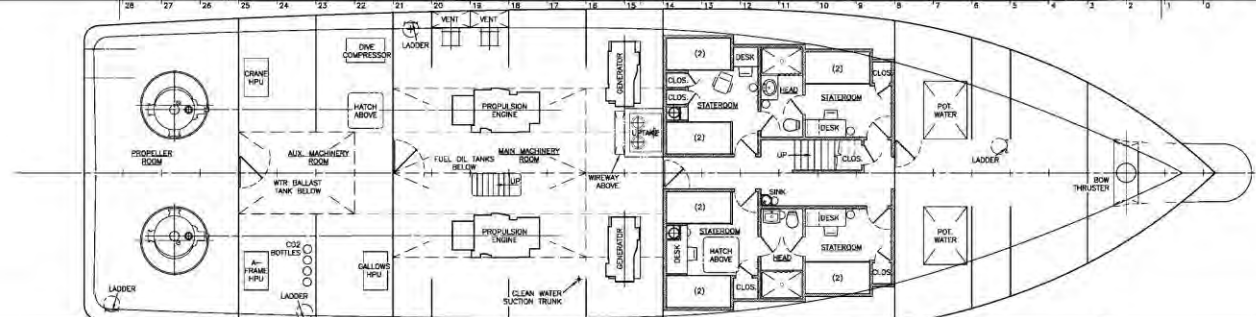
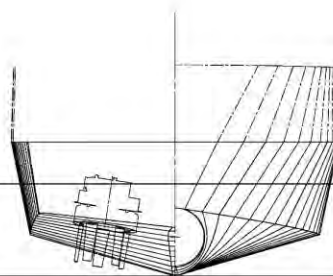
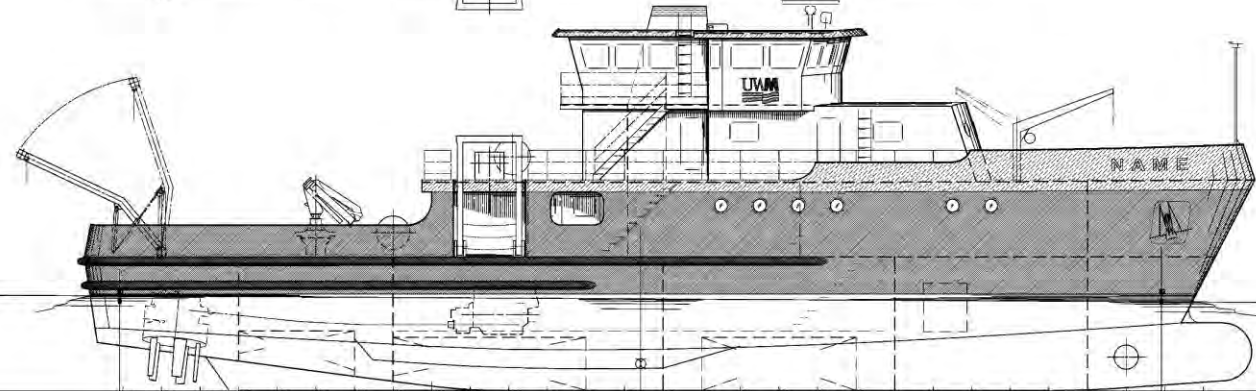
Original sketch by Tim Graul, Naval Architect, Sturgeon Bay, WI



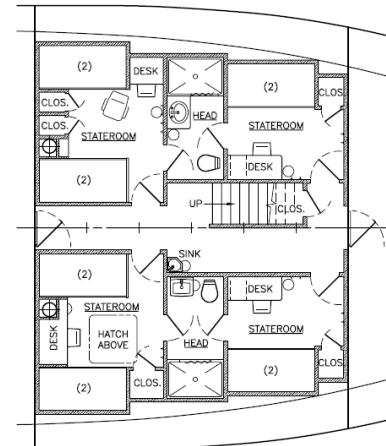


PARTICULARS

LENGTH ON DECK, MOLDED	180'-0"
LENGTH BETWEEN PERPENDICULARS	108'-0"
MAXIMUM BEAM, MOLDED	34'-0"
DEPTH AMOSHS, MOLDED	13'-10"
MAXIMUM DRAFT, AMOSHS	10'-0"
FUEL OIL CAPACITY	9,800 GAL
POTABLE WATER CAPACITY	2,000 GAL
HOLDING TANK CAPACITY	4,200 GAL
WATER BALLAST CAPACITY	1,800 GAL
PROPULSION ENGINES	(2) x 190 HP
BOW THRUSTER (ELECTRIC)	(1) x 150 HP
ELECTRICAL GENERATORS	(2) x 150 KW
GROSS TONNAGE, I.T.C.	< 500
GROSS TONNAGE, U.S. REGULATORY	< 200

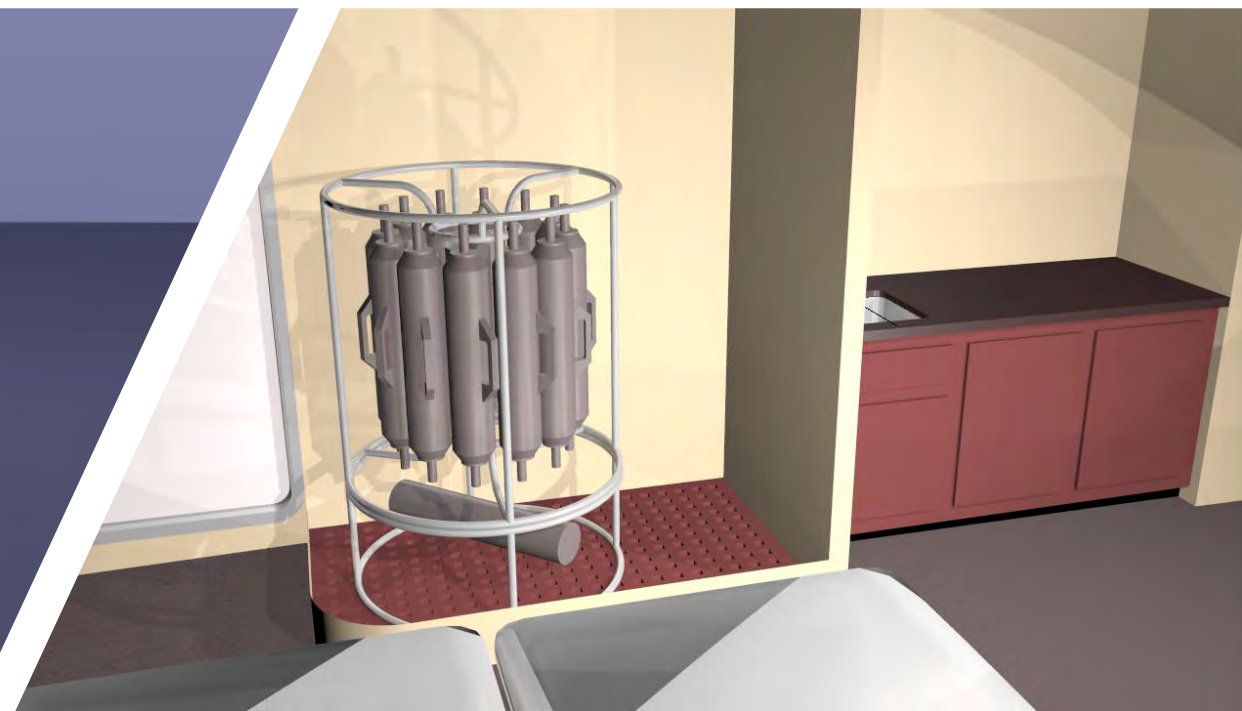


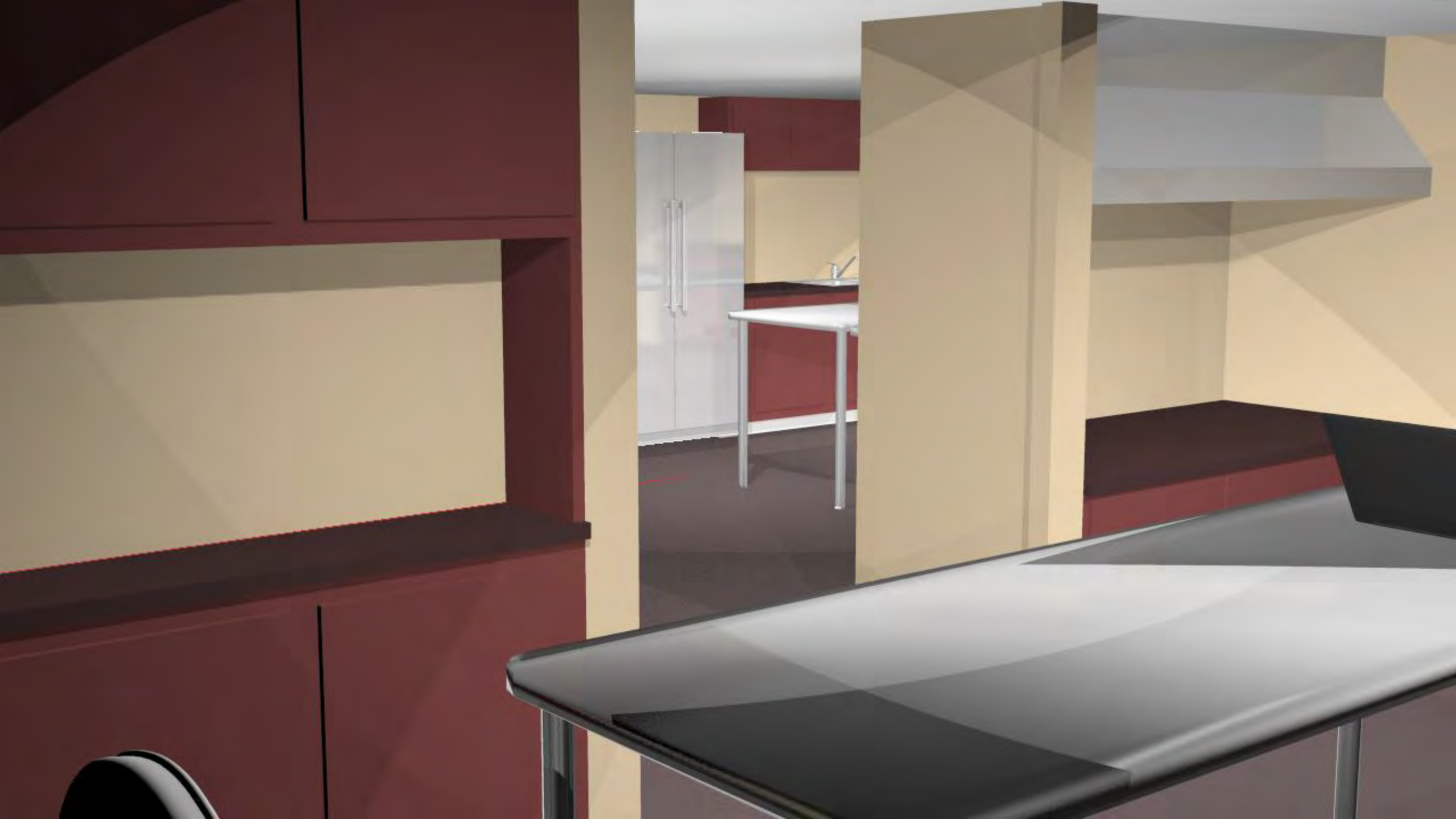
UWM 120 FT RESEARCH VESSEL
SEACRAFT DESIGN, LLC
BAS/MOD 7/30/10
SCALE 3/16" = 1'-0"

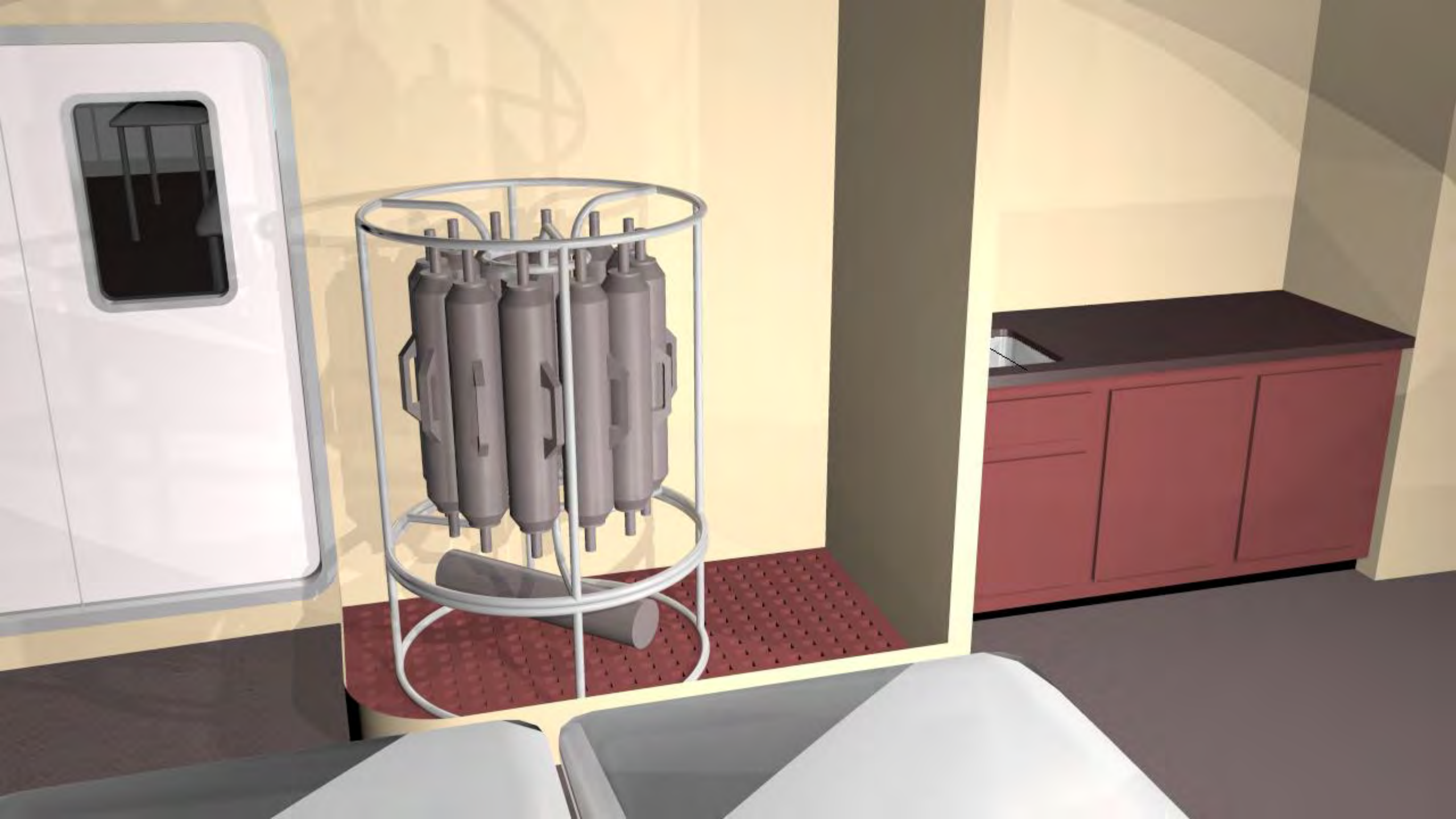


BELOW DECK ACCOMMODATIONS
CONCEPT SKETCH #1, 30 JULY 2010
PORT AND STARBOARD CAN BE MIRROR-IMAGE
TWO POSSIBLE LAYOUTS ARE SHOWN

SEACRAFT DESIGN		PROJECT: 120 FT RESEARCH VESSEL FOR U.W.M./ GREAT LAKES WATER INSTITUTE	
NAVAL ARCHITECTS & MARINE ENGINEERS		TITLE: PRELIMINARY GENERAL ARRANGEMENT	
P.O. BOX 224, BUSHONG BAY, WI 54885		JOB NO: 09015	DWG NO: 800-P7
DRAWN: SCD	DATE: 8/2/14	APPROV: SCD	DATE: 8/2/14
SCALE: 3/16" = 1'-0"		SHEET: 1 OF 1	









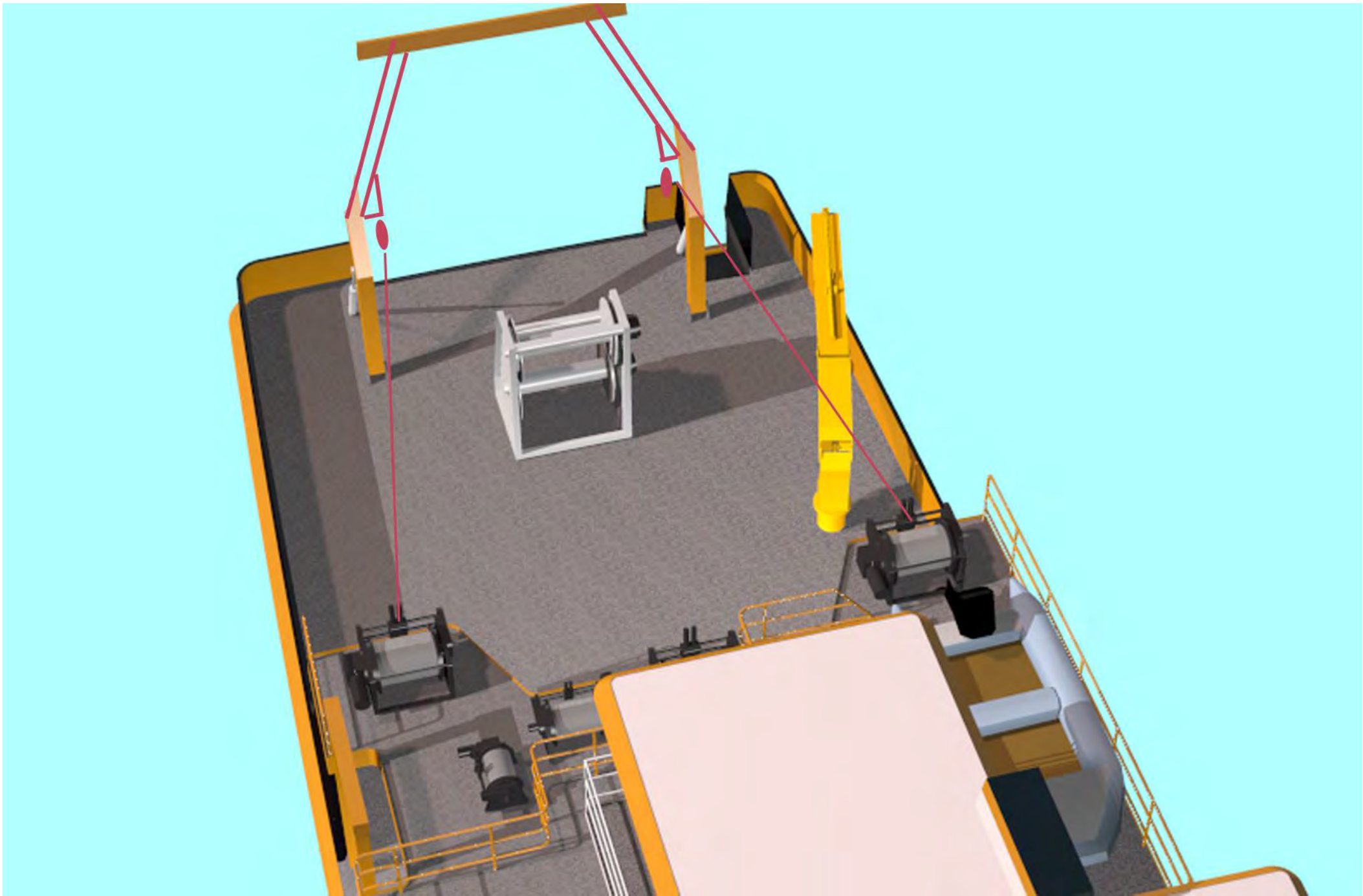




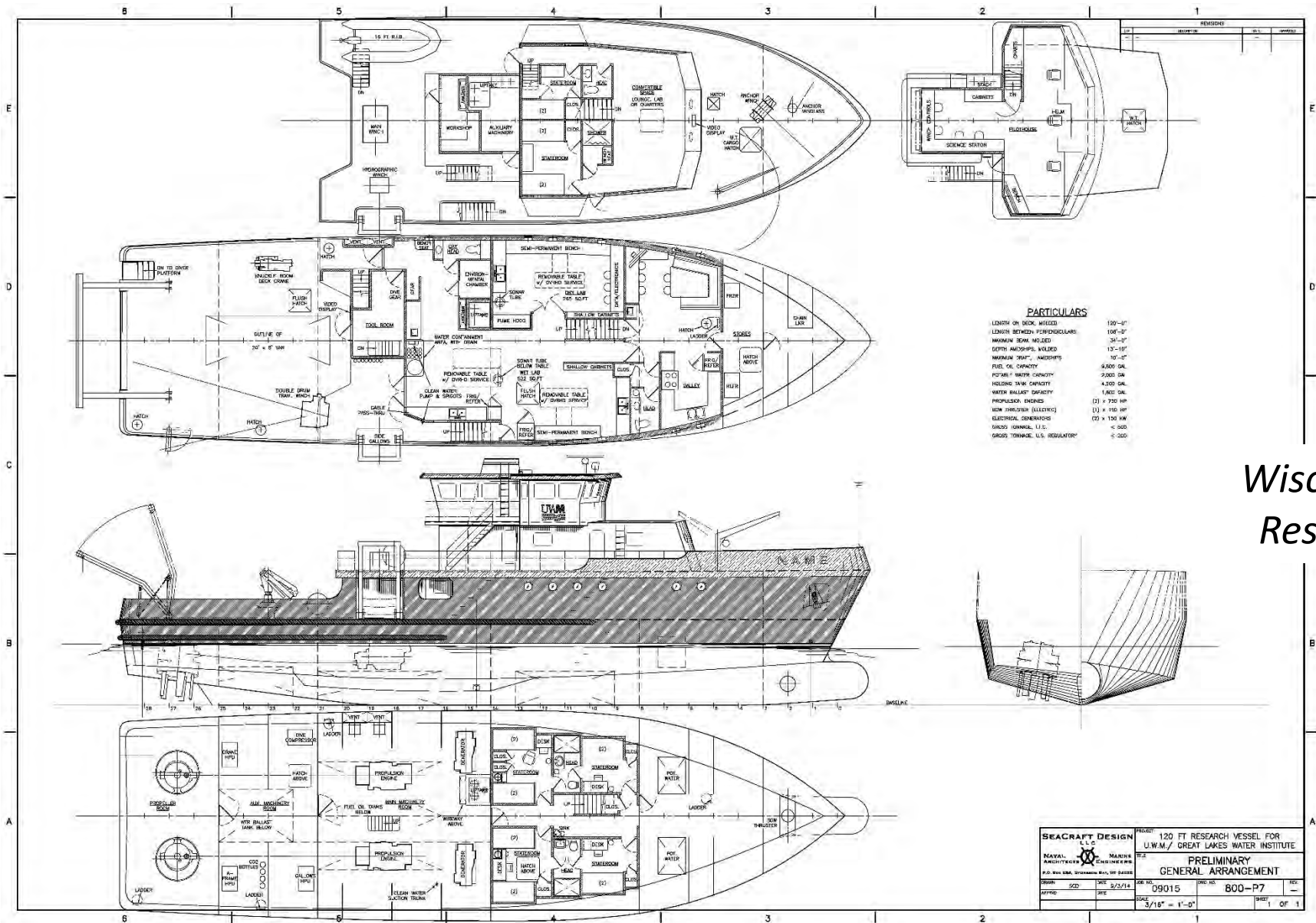















Wisconsin's New Millennium Flagship Research Vessel for the Great Lakes

-  research & exploration
-  training & education
-  security & safety

With your support!