

Great Lakes winter limnology facilitated by *Operation Coal Shovel*

R. Michael McKay

@McKayGLIER



GLIER
GREAT LAKES INSTITUTE FOR
ENVIRONMENTAL RESEARCH
at the University of Windsor



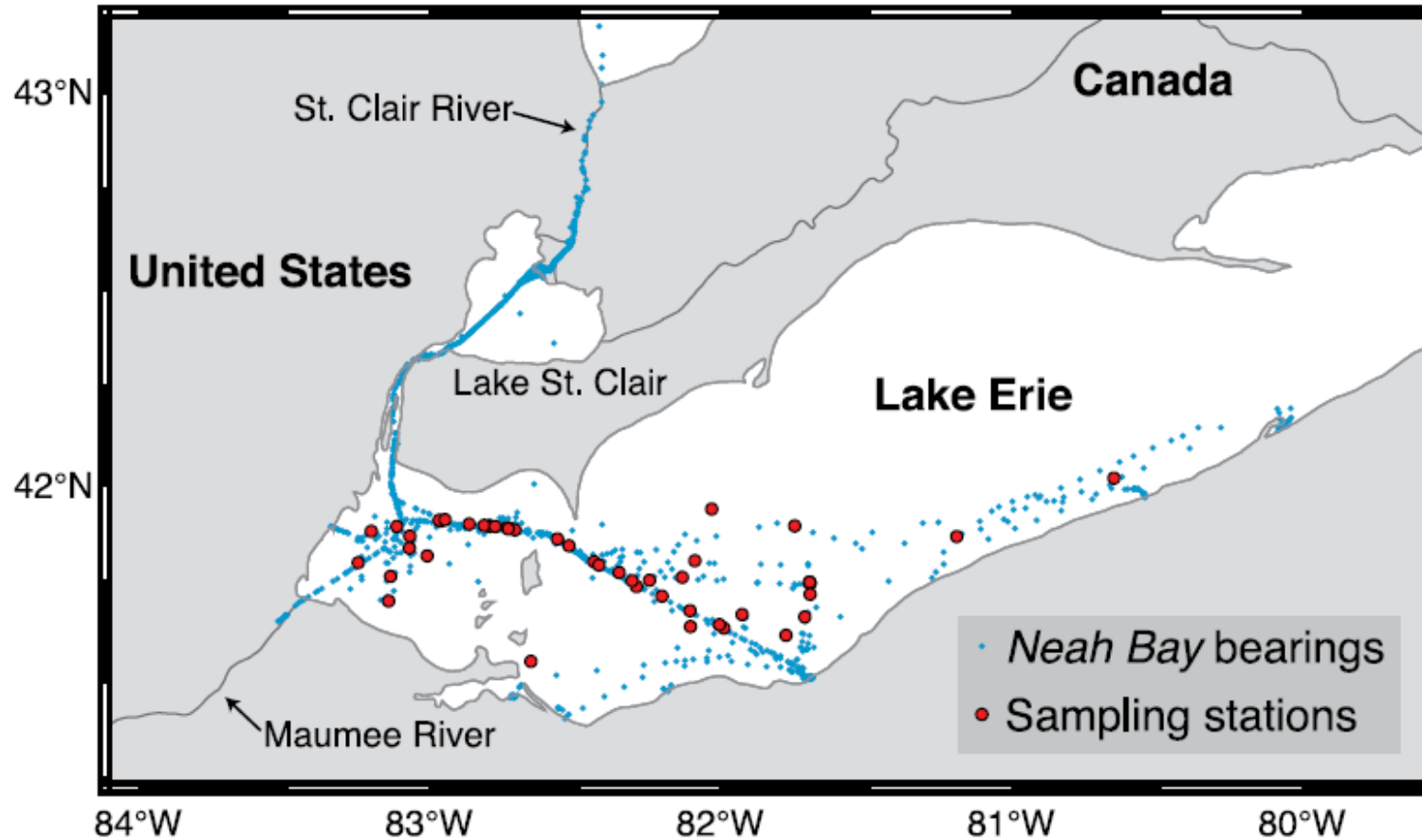
University
of Windsor

uwindsor.ca/GLIER

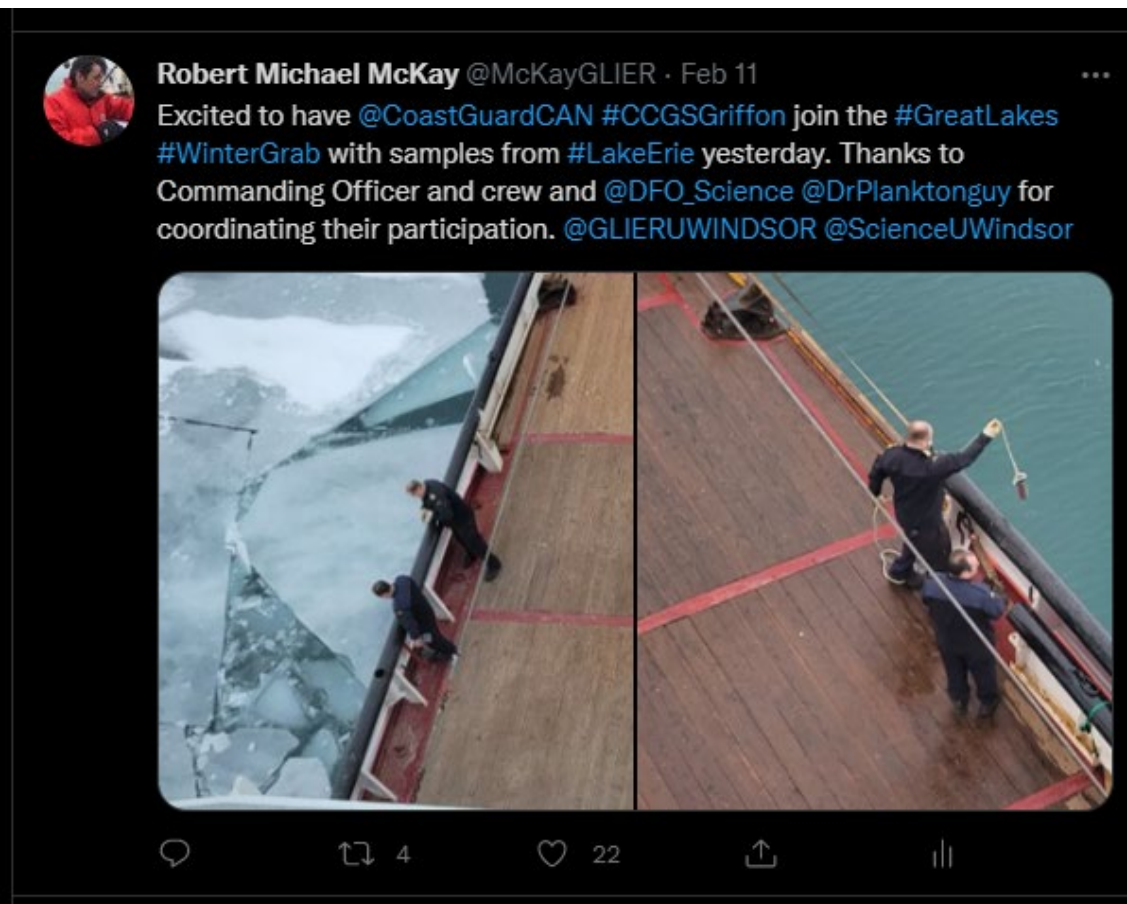


Advancing scholarship through
engagement

Winter season navigation tracks of USCGC *NEAH BAY*



Great Lakes #WinterGrab



Advancing winter limnology with the Coast Guard

Opportunity

- paradigm challenging discoveries
- safe/comfortable platform

- knowledgeable command and crew

- price is right

Challenge

- programmatic funding
- not a dedicated science vessel
- science is not a priority
- 'bull in a china shop'
- need an advocate to access this resource
- term-limited command (U.S. vessels)
- programmatic funding

Thank you!

