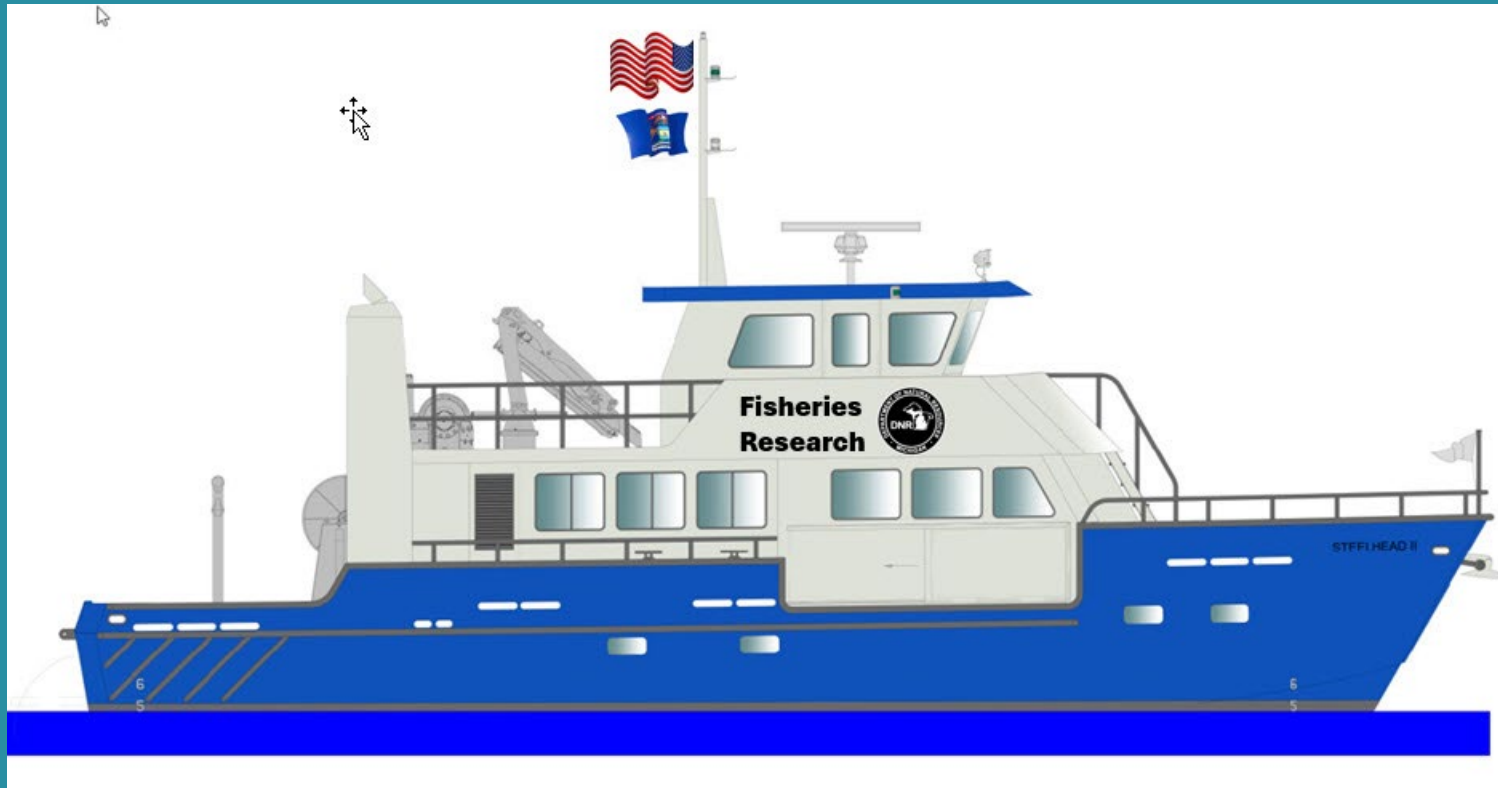


R/V Steelhead II



Length 66 feet
Beam 19 feet
Draft 5-6 feet

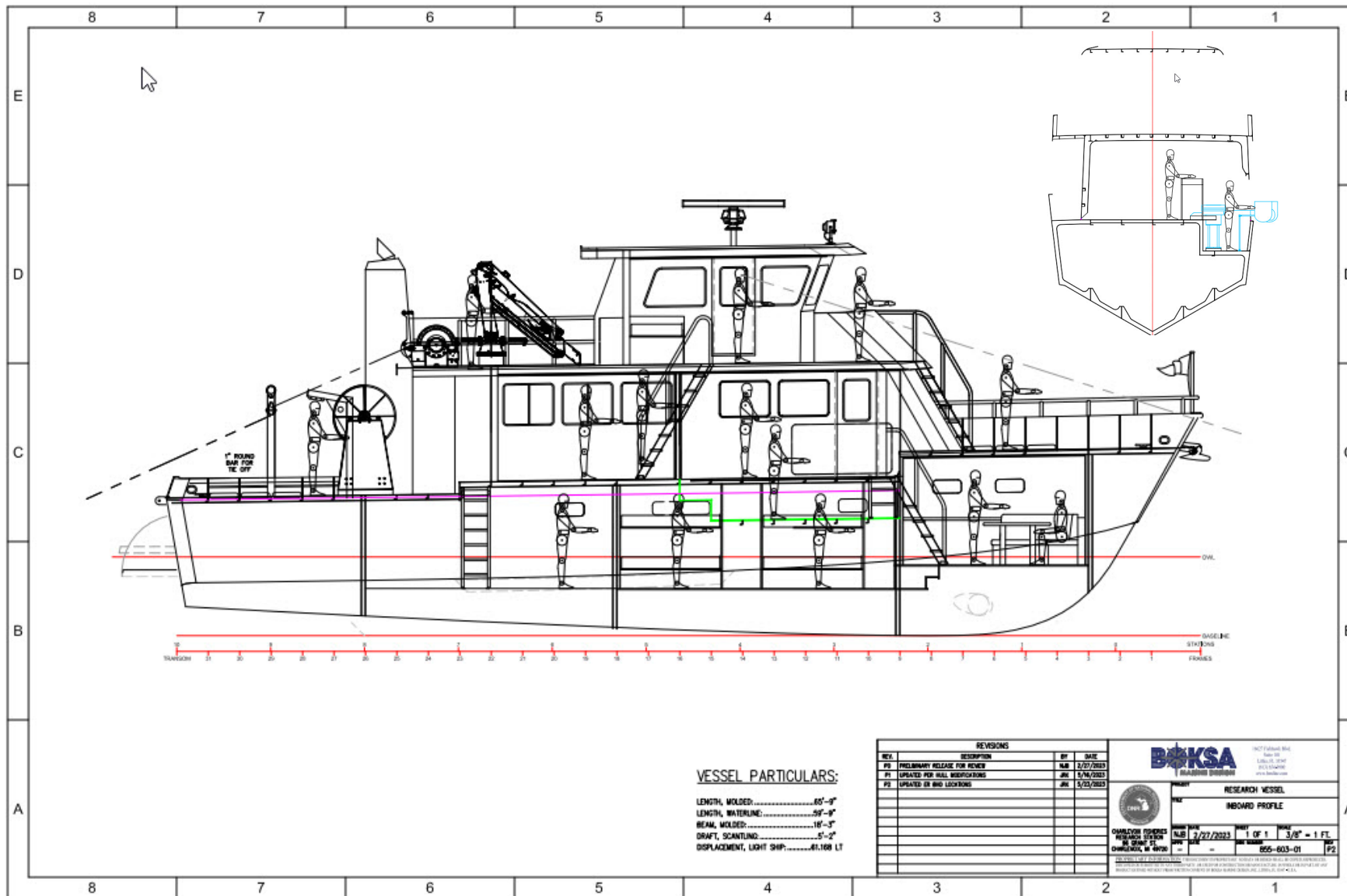


INBOARD PROFILE

Length 66 feet

Beam 19 feet

Draft 5-6 feet



VESSEL PARTICULARS:

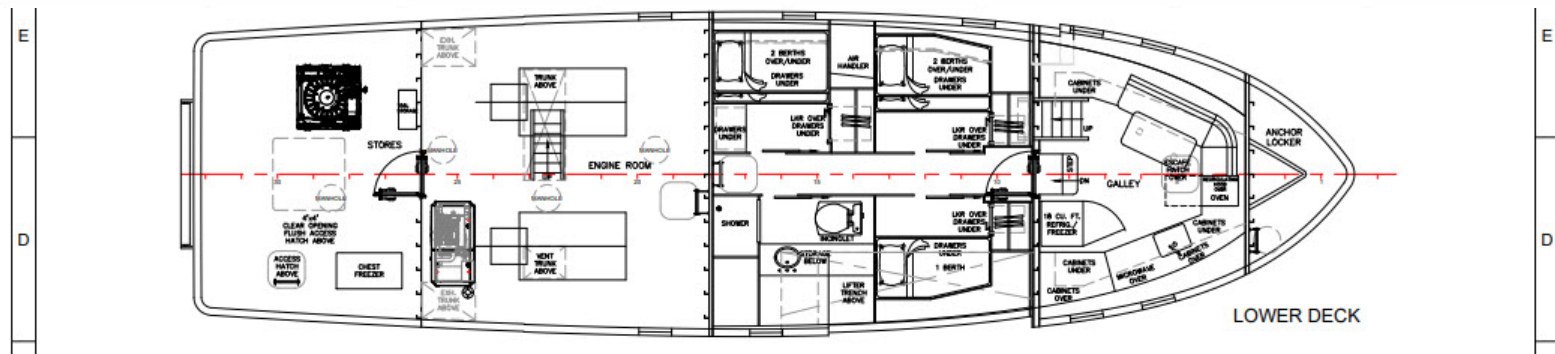
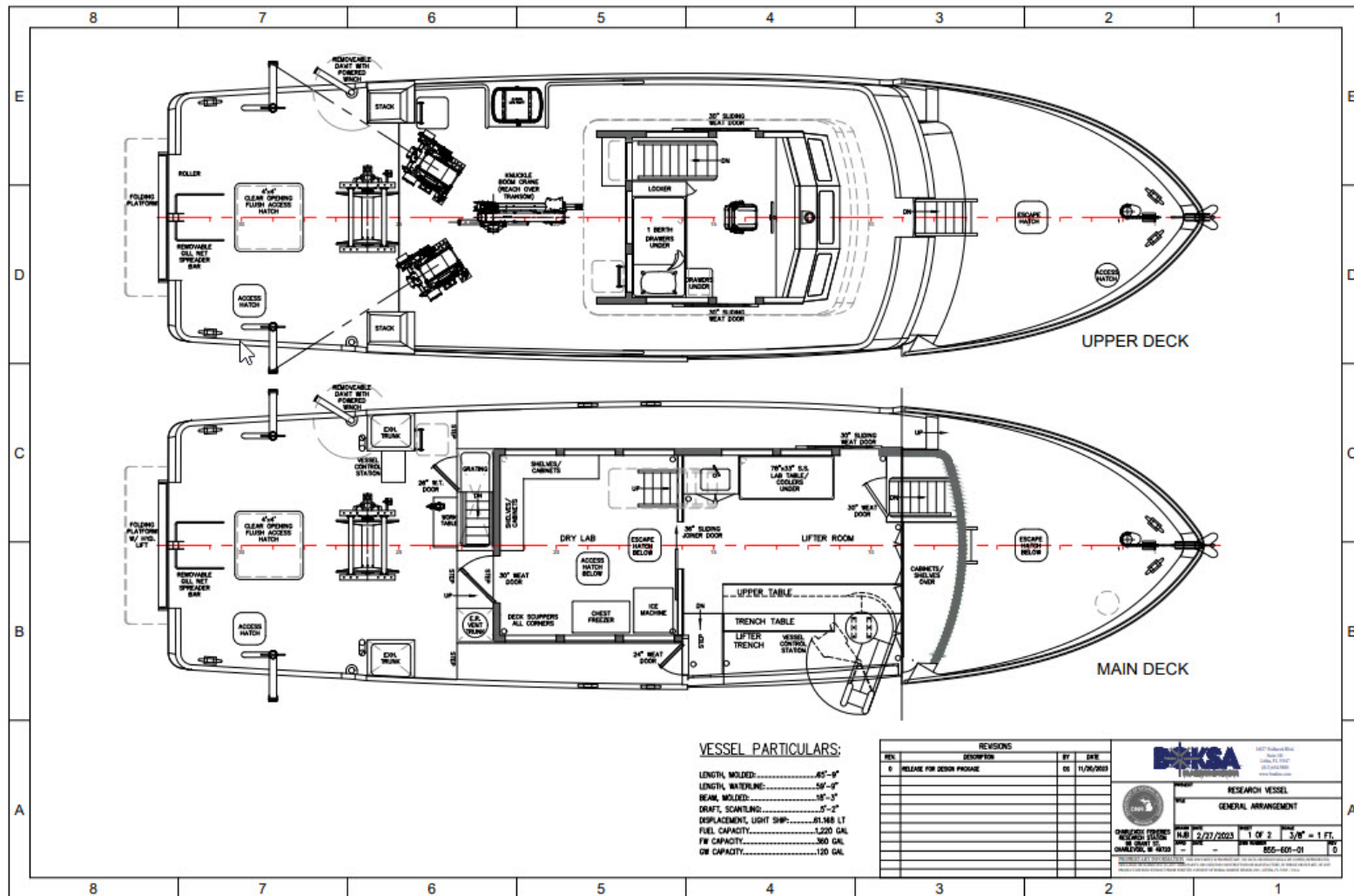
LENGTH, MOLDED:.....66'-9"
 LENGTH, WATERLINE:.....59'-9"
 BEAM, MOLDED:.....18'-3"
 DRAFT, SCANTLING:.....5'-2"
 DISPLACEMENT, LIGHT SHIP:.....41,168 LT

REVISIONS		
REV.	DESCRIPTION	BY DATE
P2	PRELIMINARY RELEASE FOR REVIEW	NAB 2/07/2023
P1	UPDATED PER HULL MODIFICATIONS	JUN 5/04/2023
P2	UPDATED ON BIRD LOCKERS	JUN 5/05/2023

BOKSA
BUILDING OFFSHORE KANSAS

1007 Palmetto Blvd.
 Suite 200
 Littleton, CO 80120
 303.534.8800
 www.boksa.com

RESEARCH VESSEL	
INBOARD PROFILE	
CHANDLER ENGINEERING RESEARCH DESIGN 10101 W. 120th St. Overland Park, MO 66209	DATE: 3/27/2023 DRAWING NO: 603-01 SHEET: 1 OF 1 SCALE: 3/8" = 1 FT. REV: P2



GENERAL ARRANGEMENT

Item	Materials	Labor	Total for the Group
Group 1: Hull Structure Technical Specifications Group 100 (section 101-180)	\$ _____	\$ _____	\$ _____
Group 2: Propulsion Plant Technical Specifications Group 200 (section 201-270)	\$ _____	\$ _____	\$ _____
Group 3: Electrical Systems Technical Specifications Group 300 and 400 (section 300-436, 491)	\$ _____	\$ _____	\$ _____
Group 4: Auxiliary Systems Technical Specifications Group 500 (section 501-581)	\$ _____	\$ _____	\$ _____
Group 5: Outfit and Furnishings Technical Specifications Group 600 (section 601-667, 668)	\$ _____	\$ _____	\$ _____
Group 6: Scientific Systems Technical Specifications (section 461, 582, 583, 592, and 668)	\$ _____	\$ _____	\$ _____
Group 7: Sea trials and shipyard services	\$ _____	\$ _____	\$ _____
Group 8: Detailed Engineering	\$ _____	\$ _____	\$ _____
Group 9: Structure Engineering, (Lofting and Nesting: May Be Provided by BOKSA Marine Design for a Fee)	\$ _____	\$ _____	\$ _____
Group 10: Delivery costs to Charlevoix, MI	XXX	XXX	\$ _____
TOTAL:			\$ _____



PRICE SHEET REQUEST

Selection Criteria (Best Value)

Experience

- 3 relevant builds in 10 years, references

Deliverables

- Timeframe for build
- Subcontractors
- Quality Control Program

Project Plan

- description of all phases of the build

Cost



WHAT'S TO COME?



- **Timeline**
- **How many vessel yards will submit bids?**
- **Will we have enough funds?**
- **Where will the selected builder be located?**
- **How much DNR oversight will be needed?**
 - **Currently we have our marine architect under contract to advise us in the build process.**
- **What will happen to the S/V Steelhead?**