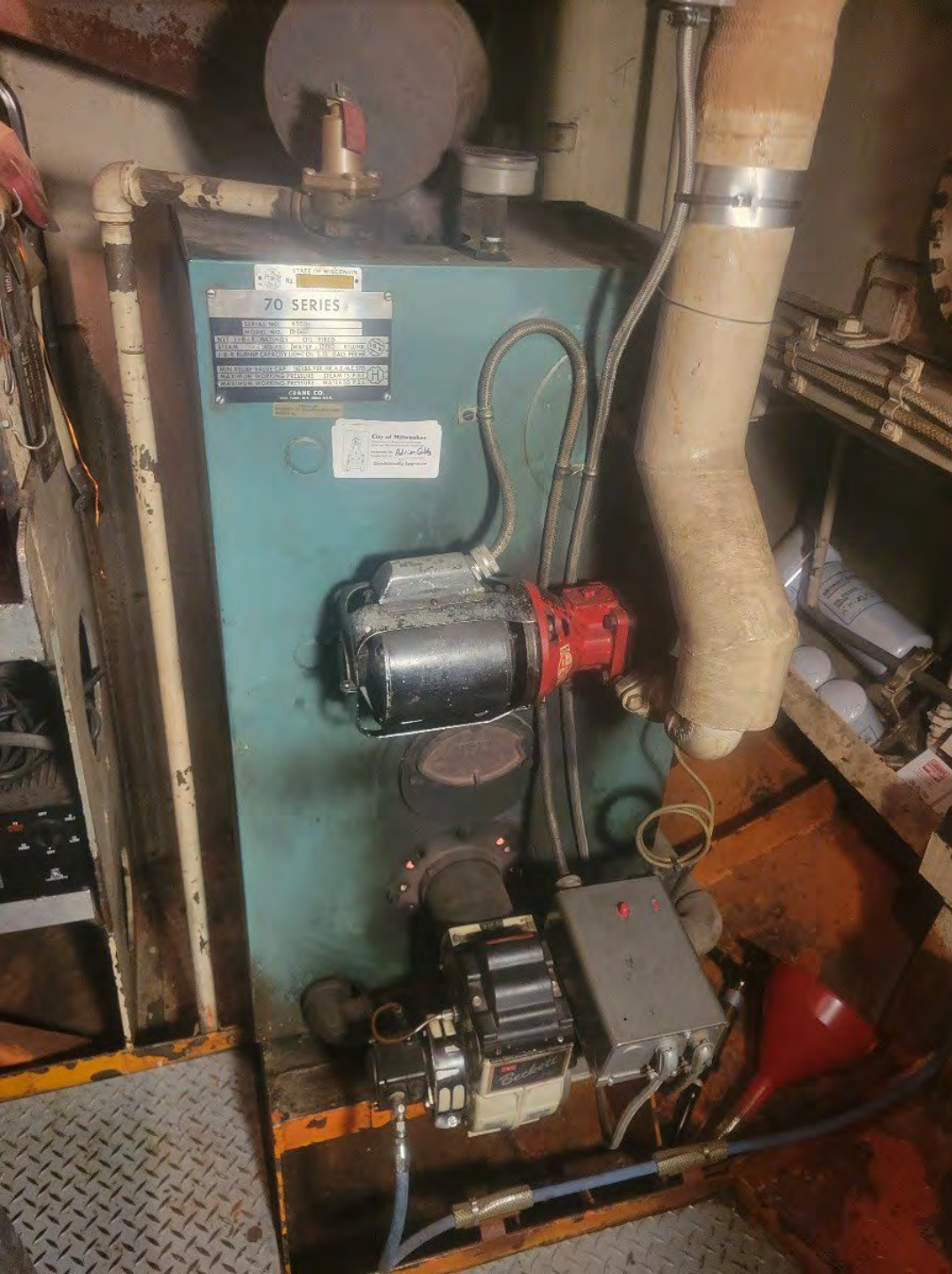




# Neeskay 2022 Sampling Season



Last Winter Maintenance  
New Injectors and Rebuilt  
Hydraulics



Winter Maintenance  
Rebuilt Boiler Ignition System



**NEW HOUSE PAINT!!**



Fresh N Clean



Advanced ROV

Pitch: -0.1 0.0  
Roll: -0.8 0.0

E 120 140 150 S 210

REC Turns: 1.0 ack zero  
Pitch/Roll

Zero Depth

DPT (ft)  
129.9

130.2



Pos: 43.0676000 -87.7601135  
Dpt: 130.2m [129.94ft]  
Alt: 27.7ft

Hdg: 140.5° [144.8°]  
P: 0.2° [0.0°]  
R: -0.7° [0.0°]



12/17/21 11:59:36

St. Albans Wreck Stern

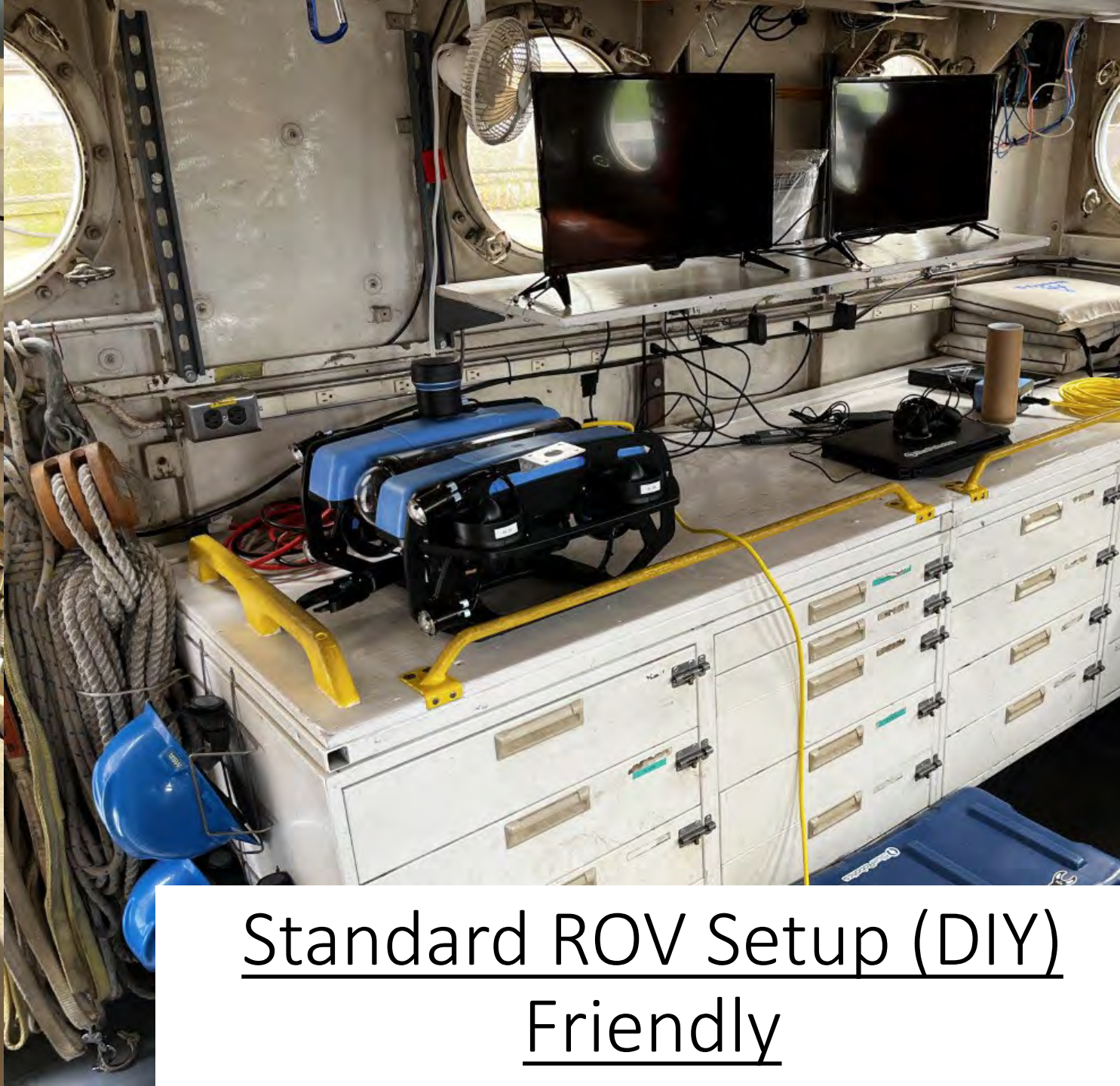


Advanced ROV setup Willem





Advanced ROV setup Willem



Standard ROV Setup (DIY)  
Friendly



Standard ROV Setup (DIY)  
Friendly

55.4 ft Depth-55.4 ft Depth-55.4 ft

72°F Cloudy



Standard ROV Setup (DIY)  
Friendly





Racine Buoy Ready to Roll

135' FOW

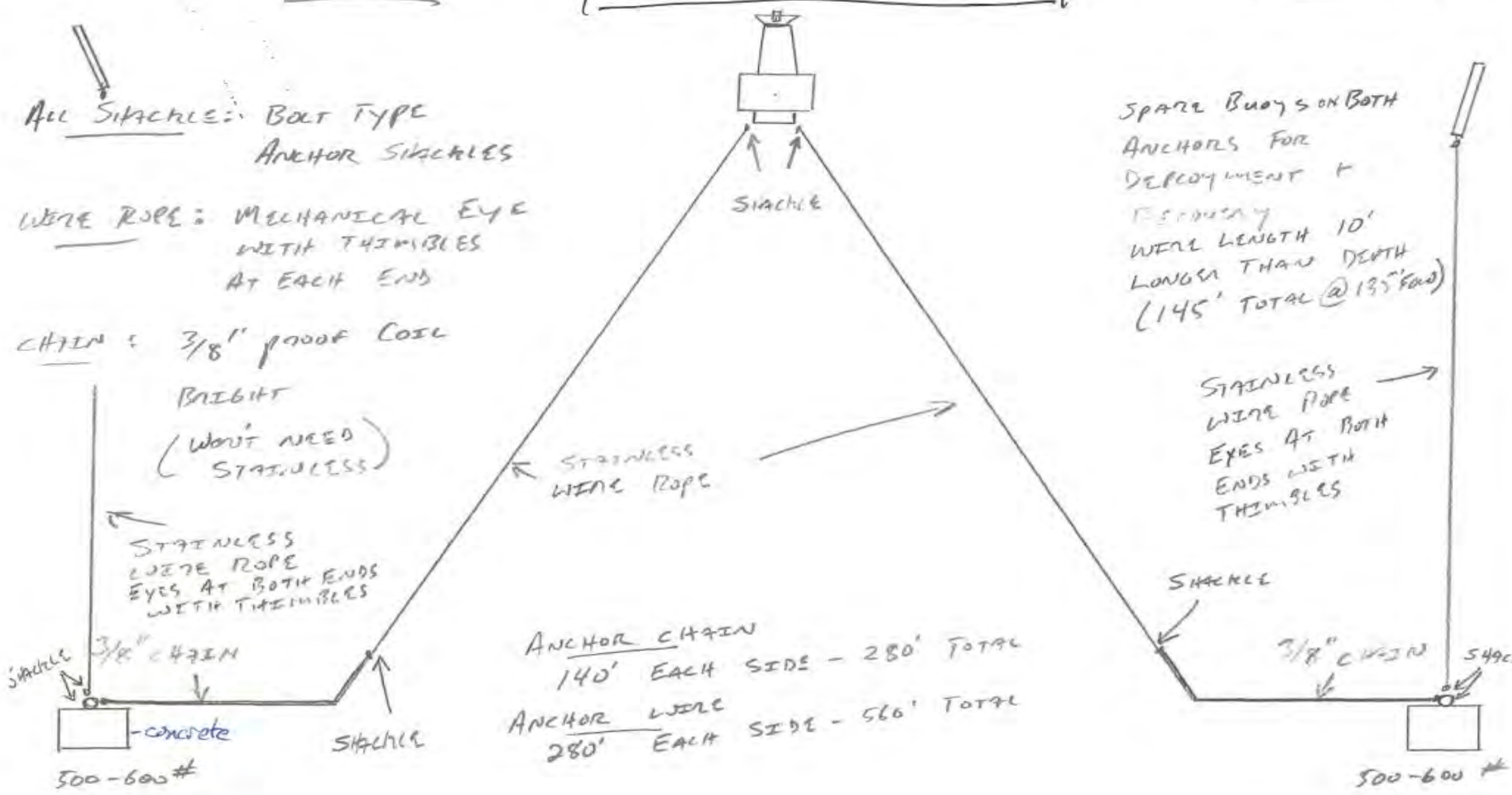
(SALMON UNFISHED)

NOT TO SCALE

All SHACKLES: BOLT TYPE  
ANCHOR SHACKLES

WIRE ROPE: MECHANICAL EYE  
WITH THIMBLES  
AT EACH END

CHAIN: 3/8" PROOF COIL  
BRIGHT  
(WOULDN'T NEED  
STAINLESS)



SPARE BUOYS ON BOTH  
ANCHORS FOR  
DEPLOYMENT +  
RECOVERY  
WIRE LENGTH 10'  
LONGER THAN DEPTH  
(145' TOTAL @ 135' FOW)

STAINLESS  
WIRE ROPE  
EYES AT BOTH  
ENDS WITH  
THIMBLES

ANCHOR CHAIN  
140' EACH SIDE - 280' TOTAL  
ANCHOR WIRE  
280' EACH SIDE - 560' TOTAL

3 TO 1 ANCHOR RATIO

Racine Buoy Schematic



Racine Buoy Launch



Hearty Crew





500lbs anchor make great grill stands



Green Bay and Atwater Buoys



Honoring a Mentor and Great Captain

# VESSEL CAPABILITIES

